

JETVENT JFU/JFR

Axial Impulse Fan

ELTA

» **Select** models available for next day delivery



JETVENT JFU/JFR

Product Overview

- 3 standard sizes from 315mm to 400mm
- Removes car park pollutants including smoke without the use of ducting
- Available as unidirectional or reversible
- Suitable for operating temperatures up +300°C for 2 hours
- EN12101 certified with BSI Kitemark

The Jetvent Axial Impulse fan range is available with either unidirectional or truly reversible airflow. Jetvent can run in either normal extract mode or once only smoke operation at up to 300°C for 2 hours which means cost savings as a single fan provides both general and smoke extract requirements.

Security

The elimination or reduction in ductwork means a safer, lighter environment with better security due to the increased visibility.

No Ductwork

By adding momentum to the air, Jetvent fans thrust air towards the desired extract points to ensure stagnant fumes and smoke are cleared effectively and efficiently. This principle eliminates the requirement for ductwork within a car park, as the Jetvent effectively transfers the polluted air, allowing for better use of limited space in underground facilities.

Low Maintenance

With no ductwork, maintenance costs are reduced as there is no ducting to become blocked, damaged or subject to leakage.

Cost Effective

Jetvent provides the scope for reduced installation and overall construction build costs compared with traditional ducted systems. The high efficiency impellers make this a very economical method of moving high volumes of air.

Design Appeal

The integral bell mouth inlet has a streamlined appearance for improved performance and sound.

Robust Design

Jetvent axial fans are of a robust, heavy duty construction for added strength and durability. Fan casings are heavy gauge, sheet steel, roll formed and welded and hot dipped galvanised after fabrication to BS EN ISO 1461.



Product Coding

Code	Reference
JF	Jetvent Flanged (JF)
U	Unidirectional (U) / Reversible (R)
/	
F3	F300 (F3) / F400 (F4)
-	
400	Ø315 (315) / Ø355 (355) / Ø400 (400)
-	
2	Single Speed (1) / Two Speed (2)
-	
H	Standard Thrust (S) / High Thrust (H)
A	400V 50Hz (A) / 460V 60Hz (B) / 380V 60Hz (C)
I	Isolator, Switch Disconnect (I) / Terminal Box (T)
e.g.	JFU/F3-400-2-HAI

Optional Finishes

Code	Reference
EXPNT	Painted External
INPNT	Painted Internal
ALLPNT	Painted Internal & External

JETVENT JFU/JFR



Performance Data

Unidirectional Units

Jetvent 50Hz, 400V, Three Phase

Product Code		Thrust N	Volume Flow Rate m³/s	Velocity m/s	Sound Pressure dBA @ 1m	Speed r/min	Motor Power kW	FLC Amps	SC Amps	Absorbed Power kW
JFU/F3-315-2-HAI	High	30	1.40	17.91	65	2875	1.27	2.73	14.5	0.91
	Low	10	0.81	10.34	47	1460	0.29	0.82	2.9	0.15
JFU/F3-355-2-HAI	High	50	2.03	20.52	70	2920	2.53	5.25	31.5	1.73
	Low	15	1.11	11.24	52	1475	0.58	1.68	5.4	0.23
JFU/F3-400-2-SAI	High	50	2.29	18.21	63	2835	1.27	2.73	14.5	0.95
	Low	16	1.29	10.30	47	1450	0.29	0.82	2.9	0.15
JFU/F3-400-2-HAI	High	80	2.89	23.03	69	2895	2.53	5.25	31.5	2.30
	Low	18	1.37	10.93	51	1465	0.58	1.68	5.4	0.30

Reversible Units

Jetvent 50Hz, 400V, Three Phase

Product Code		Thrust N	Volume Flow Rate m³/s	Velocity m/s	Sound Pressure dBA @ 1m	Speed r/min	Motor Power kW	FLC Amps	SC Amps	Absorbed Power kW
JFR/F3-315-2-HAI	High	24	1.24	15.91	66	2895	1.27	2.73	14.5	0.86
	Low	6	0.63	8.08	48	1470	0.29	0.82	2.9	0.13
JFR/F3-355-2-HAI	High	43	1.89	19.07	70	2945	2.53	5.25	31.5	1.54
	Low	11	0.95	9.63	53	1490	0.58	1.68	5.4	0.23
JFR/F3-400-2-SAI	High	52	2.02	21.64	66	2841	1.3	2.41	14.5	1.17
	Low	16	1.02	10.87	57	1443	0.28	0.75	2.85	0.17
JFR/F3-400-2-HAI	High	83	2.61	26.42	72	2900	2.53	5.25	31.5	2.74
	Low	21	1.33	13.45	55	1475	0.58	1.68	5.4	0.42

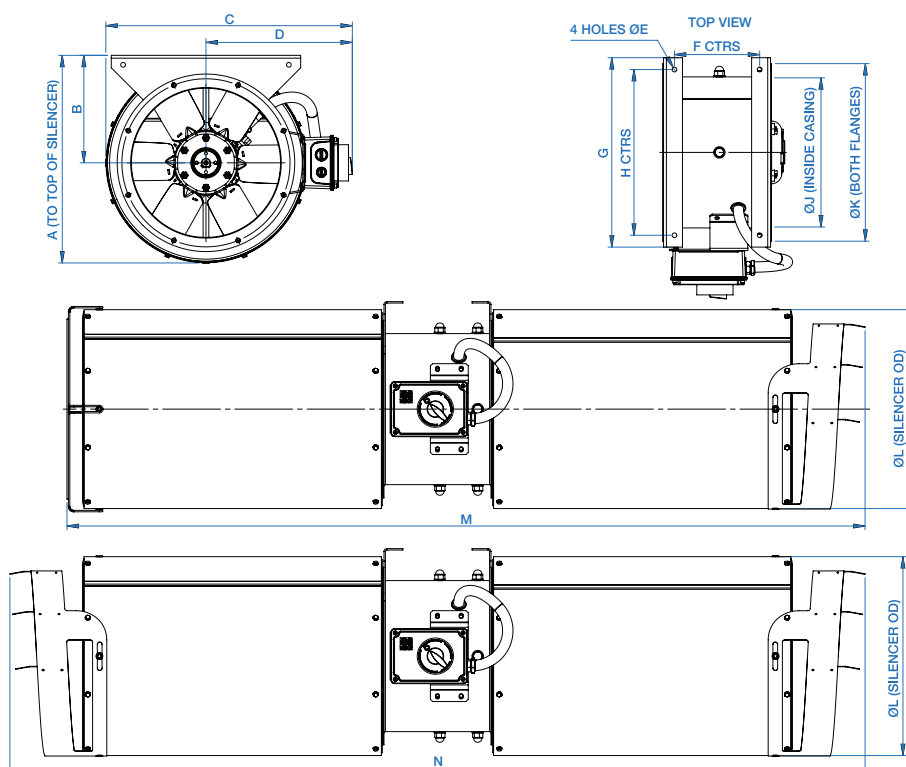
All dimensions are expressed in mm. All dBA figures shown are free field sound pressure levels at 45° to inlet/outlet. All starting currents shown are direct online (DOL). Air density used in all figures is 1.2kg/m³. Single speed options available. F200 & F400 variations available. Further details on request. Codes shown are for isolator versions. Terminal box version also available. 60Hz data available upon request.

JETVENT JFU/JFR



Dimensional Data

Product Code	A	B	C	D	E	F	G	H	J	K	L	M	N	Weight kg
JFU/F3-315	439	227	521	309	10	180	400	350	315	375	420	1686	-	58
JFR/F3-315												-	1806	
JFU/F3-355	442	227	558	333	10	198	450	400	355	425	427	1694	-	79
JFR/F3-355												-	1815	
JFU/F3-400	520	266	612	358	10	198	500	450	400	475	505	2190	-	98
JFR/F3-400												-	2344	



Dimensions are in mm.

JETVENT JFU/JFR

Accessories



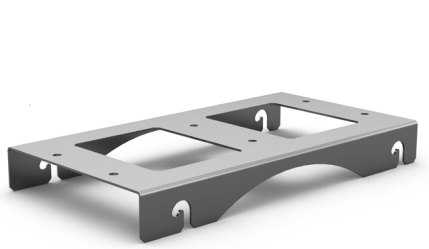
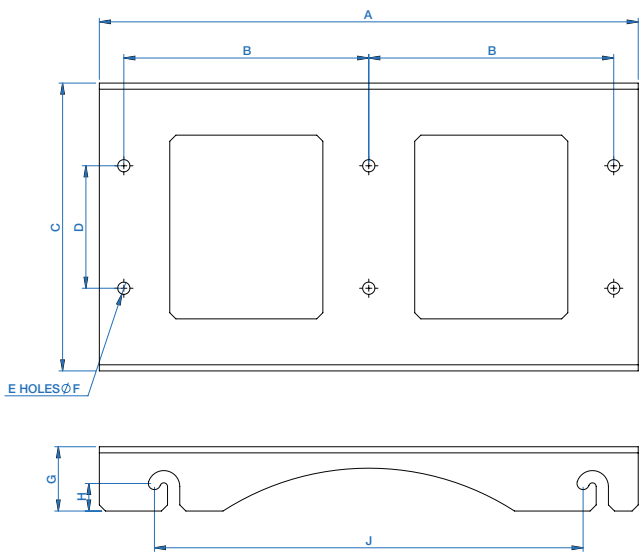
Product Code	Jetvent Mounting Bracket
JFU/F3-315	260-0315-JET
JFR/F3-355	260-0355-JET
JFR/F3-400	260-0400-JET
Page No.	441

JETVENT MOUNTING BRACKET

Overview

- Quick mounting bracket for axial carpark fans JFU/JFR
- Can be pre fitted to the ceiling
- Fan is hooked onto bracket and secured with 2x bolts
- Pre-galvanised sheet steel

Product Code	Dia.	A	B	C	D	E	F	G	H	J
260-0315-JET	315	440	200	236	100	61	0	52.5	22.5	350
260-0355-JET	355	490	225	253	117					400
260-0400-JET	400	540	250	253	117					450



JETVENT JFU/JFR

Notes

This image shows a single sheet of white paper with horizontal blue ruling lines. The lines are evenly spaced and run across the width of the page. There are no margins, text, or other markings on the paper.

Tel **+44 (0) 1384 275800**
Email **info@eltauk.com**
eltauk.com

JFU/JFR-11-2022 Issue B



BS EN ISO 9001:2015 FM 556465

