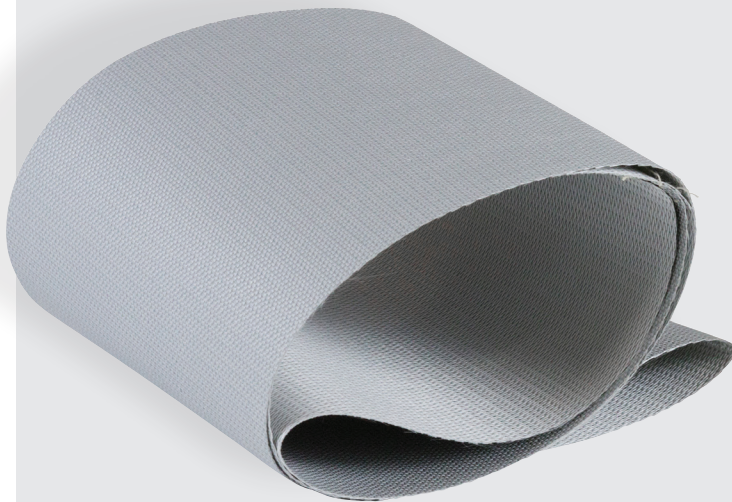


# HIGH TEMPERATURE FLEXIBLE CONNECTOR

---

**ELTA**

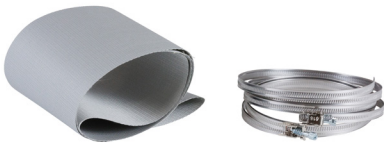
>> **Select** models available for next day delivery



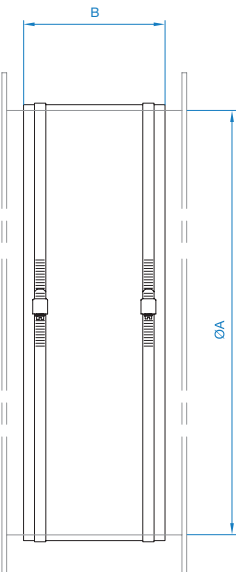
# HIGH TEMPERATURE FLEXIBLE CONNECTOR

## Overview

- Fit to matching flanges to provide flexible connection
- Polyurethane coated glass fibre fabric
- Supplied with plated steel band fixings
- Alternative materials available to order
- Suitable for -50°C and +200°C and up to +400°C / 2 hours



Product Code	Fan Dia. A	B	Weight kg
063-0250-PU250	250	150	0.5
063-0315-PU250	315	150	0.6
063-0400-PU250	400	150	0.9
063-0500-PU250	500	150	1.2
063-0560-PU250	560	150	1.3
063-0630-PU250	630	200	1.4
063-0710-PU250	710	200	2.0



Dimensions are in mm.

# HIGH TEMPERATURE FLEXIBLE CONNECTOR

## Notes

This image shows a single sheet of white paper with horizontal blue ruling lines. The lines are evenly spaced and run across the width of the page. There are no margins, text, or other markings on the paper.

Tel **+44 (0) 1384 275800**  
Email **info@eltauk.com**  
**eltauk.com**

063-PU-03-2018 Issue A



BS EN ISO 9001:2015 FM 556465



A member of  
HEVAC ASSOCIATION



A MEMBER OF  ELTA  
GROUP