

GL GAMMA

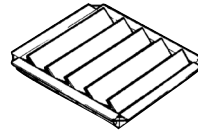
Centrifugal Roof Units

ELTA

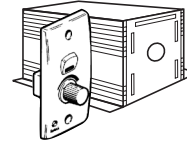




Ancillary Equipment



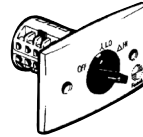
CBD - Backdraft shutter



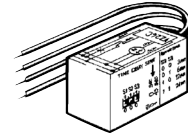
Speed controllers



VA - Speed controller



SD - Star/Delta switch



VZ - Run-on timer

Description

The GL Gamma centrifugal roof units feature a removable windband that provides easy access for cleaning and maintenance. These compact, low profile fans are suited for ducted exhaust applications and are available in 8 sizes extending from 315 to 710mm diameter.

Typical Applications

Designed for use in commercial kitchen exhaust installations as well as applications requiring vertical discharge and all metal construction.

Features

- Robust, galvanised steel construction.
- Fitted with a high performance backward-curved centrifugal fan.
- Choice of speeds available.
- Quick release toggle clamps provide easy access for cleaning and maintenance.
- Speed-controllable with electronic or auto-transformer controllers (not on CE316VGL).
- Many 3-phase motors are 2-speed star/delta design
- Can be mounted at angles up to 30°.

Construction

Cowls are of galvanised steel construction

Backward-curved centrifugal impellers

Bird-mesh guards are an optional extra

Powder-coating is an optional extra

Motor

Type - external rotor, squirrel cage induction motors.

Electricity supply - 230V, single and 415V, three-phase, 50Hz.

Ball Bearing - sealed for life.

Speed-controllable using electronic or auto-transformer controllers (not CE316VGL).

Internal Thermal Protection

All motors are fitted with Internal Thermal Contacts as standard.

Testing

Airflow tests to ISO5801:1997

Noise tests to BS848:Part 2, 1985

Additional Information

Backdraft shutters are an optional extra. The pressure loss across the shutter has to be added to the system pressure before making fan selections.

Kitchen Hood Exhaust System

AS1668.1:1998 Clause 11.2.5 states that, for commercial installations, Kitchen Exhaust fan casings and cowls shall be manufactured from non-combustible materials that have a fusing temperature above 1000°C.

Suggested Specifications

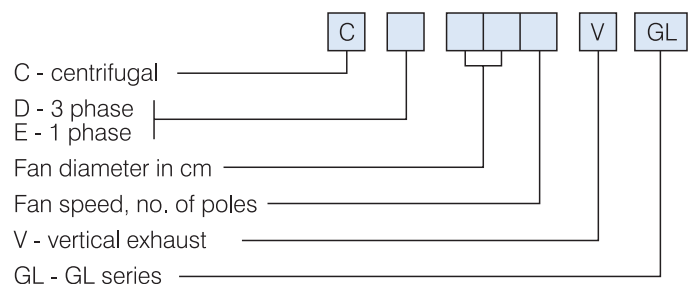
The roof ventilators shall be of the GL Gamma vertical discharge type as designed and manufactured by Elta.

Impellers shall be backward-curved centrifugal design and driven by speed-controllable external rotor motors with integral thermal protection.

The cowls shall be of the vertical discharge design and manufactured from galvanised steel. Steel components to be corrosion protected.

All data shall be based on tests on a complete assembled unit to ISO5801:1997 for airflow and BS848:Part 2, 1985 for noise.

How To Order



Technical Data & Noise Levels

Model	Nom. Speed	Avg dB(A) @ 3m		CE.. 1 ph.		CD.. 3 ph.		In-duct Spectrum Corrections, dB**								
		CD...VGL	CE...VGL	Low Air Flow	High Airflow	kW	Amps*	kW	Amps*	63	125	250	500	1k	2k	4k
314.	23	Inlet	47	48	0.15	0.66	0.18	0.37	35	29	21	18	10	10	8	2
316.†	15	Inlet	40	42	0.07	0.54	0.09	0.15	34	26	22	18	12	12	6	0
354.	23	Inlet	52	51	0.28	1.25	0.19	0.51	28	26	22	19	10	12	11	1
356.	15	Inlet	43	43	0.07	0.32	0.13	0.22	33	25	22	19	14	8	3	0
404.	23	Inlet	56	54	0.49	2.20	0.45	1.40	28	26	21	18	11	12	12	5
406.	15	Inlet	44	44	0.17	0.80	0.23	0.73	33	28	22	19	14	10	7	3
408.	11	Inlet	39	40	-	-	0.16	0.30	33	26	19	16	14	14	12	3
454.	23	Inlet	59	57	0.76	3.50	0.77	1.47	27	25	20	17	11	12	12	8
456.	15	Inlet	47	46	0.43	2.00	0.44	0.90	31	30	21	18	13	11	9	5
458.	11	Inlet	41	43	-	-	0.15	0.35	33	26	19	16	14	14	12	3
504.	23	Inlet	62	61	1.30	5.70	1.39	2.70	26	26	21	15	12	12	12	9
506.	15	Inlet	50	50	0.53	2.50	0.65	1.20	30	29	22	16	12	10	8	6
508.	11	Inlet	43	45	0.23	1.15	0.30	0.50	32	26	20	16	14	13	12	4
564.	23	Inlet	65	65	-	-	2.16	4.10	26	27	23	14	13	12	12	10
566.	15	Inlet	54	54	0.84	4.10	0.69	1.45	29	29	23	15	12	10	8	7
568.	11	Inlet	44	47	0.32	1.50	0.39	0.79	30	27	22	15	15	11	11	6
634.	23	Inlet	69	70	-	-	4.30	7.35	24	28	24	12	13	11	12	10
636.	15	Inlet	60	58	-	-	1.10	2.20	28	29	24	14	12	10	8	8
638.	11	Inlet	46	50	-	-	0.68	1.20	28	27	23	14	14	9	10	6
716.	15	Inlet	63	61	-	-	2.20	4.30	28	29	24	14	12	10	8	8
718.	11	Inlet	48	53	-	-	0.66	2.00	28	27	23	14	14	9	10	6
711.	9	Inlet	41	46	-	-	0.28	1.20	28	27	23	14	14	9	10	6

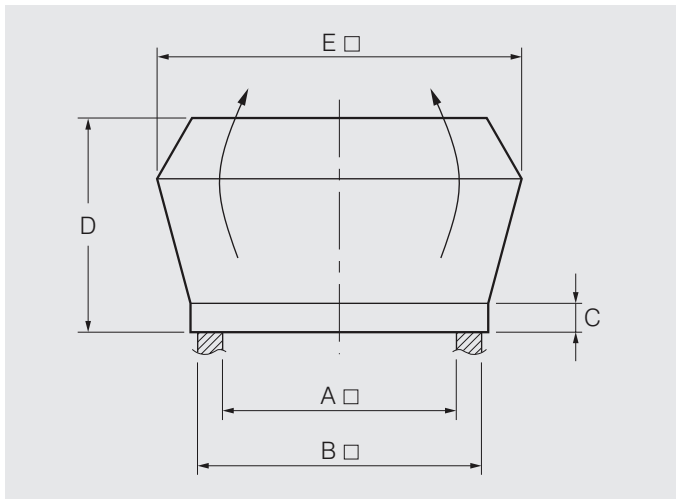
Electrical data in **bold** type refers to fans fitted with 2-speed star/delta motors as standard.

* Amperages shown are a guide only, refer to our Sales Department for accurate figures at time of order.

** Add the In-Duct Spectrum Corrections to the closest dB(A) level shown on the fan curve to obtain the In-Duct Sound Power Levels on the Inlet Side of the unit.

† The CE316VGL is not speed controllable.

Dimensions



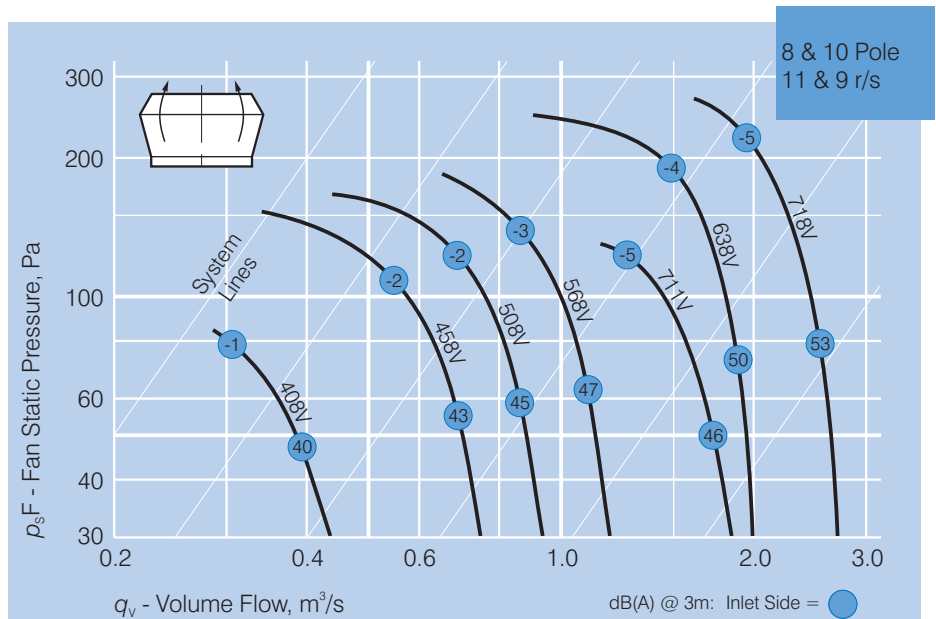
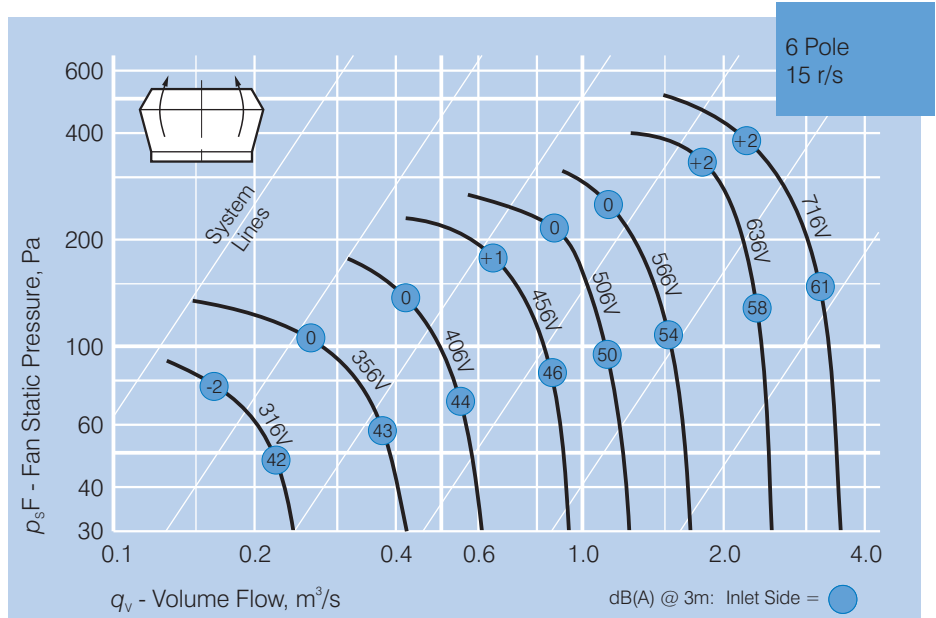
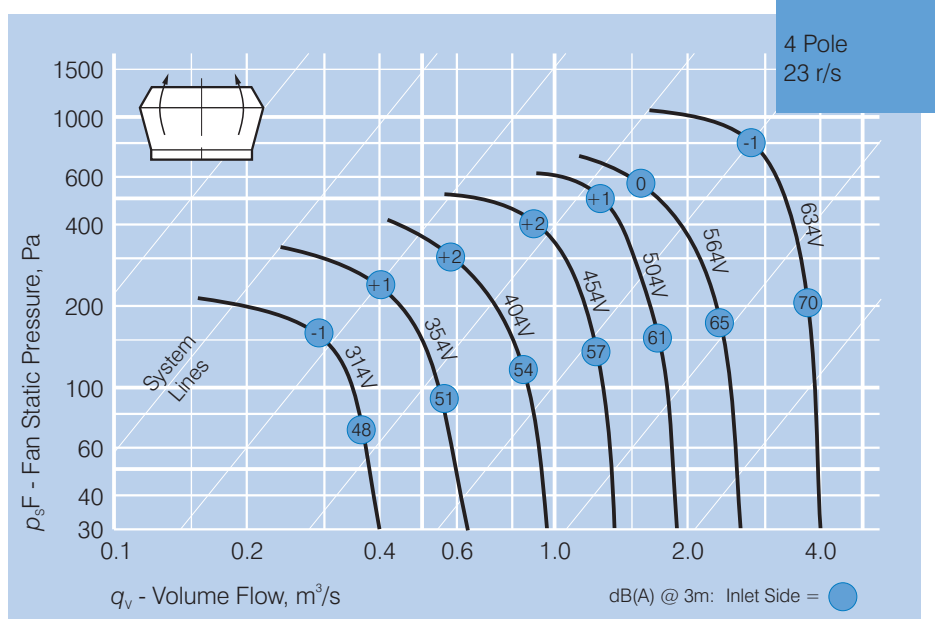
Model	CD...VGL Dimensions, mm					Approx. weight	Approx. volume
CE...VGL	A	B	C	D	E	kg.	m³
314							
316	310	410	50	310	520	16	0.10
354							
356	400	500	50	420	670	26	0.22
404							
406	400	500	50	420	670	26	0.22
408							
454							
456	620	720	60	525	900	49	0.50
458							
504						57	
506	620	720	60	525	900	51	0.50
508							
564						65	
566	620	720	60	525	900	56	0.50
568							
634						97	
636	710	810	60	665	1160	78	1.03
638							
716						95	
718	710	810	60	665	1160	83	1.03
711							

GL GAMMA

Additional Information

Performance curves shown are based on nominal speeds.

As motor speeds may vary from one manufacturer to another, and from one motor type to another, variations in performance can result.





Elta Asia Sdn Bhd

Tel +603 7846 0340
Email info@elta.asia

elta.asia

GLG-05-2026 Issue A



FS 676456