

ANCILLARY EQUIPMENT

Accessories

ELTA



ANCILLARY EQUIPMENT

ABD - BUTTERFLY SHUTTERS



Features

Butterfly shutters have plastic, steel or aluminium flaps. All steel components are galvanised or have a corrosion-resistant finish.

They are optional extras on Alpha and New Generation RDE units and standard supply on Beta and New Generation RVE units. They are not fitted to any supply air units.

Selection Table

Alpha Model AD/AE	New Generation Model RDE..	Butterfly Shutter Part No.
31.	031.	ABD-1
35.	-	ABD-1
40.	040.	ABD-2
45.	-	ABD-2
50.	050.	ABD-3
56.	056.	ABD-3
-	0634.	ABD-4
636/8.	0636/8.	ABD-4
71.	071.	ABD-4
80.	080.	ABD-5
-	100.	ABD-6

CBD - BACKDRAFT SHUTTERS



Features

These shutters are designed to fit inside the unit base and be positioned on the roof curb before fitting the roof unit. The curb surface must be flat to permit an airtight seal.

CBD backdraft shutters have a galvanised steel frame and extruded PVC flaps; the flap spindles run in nylon bushes.

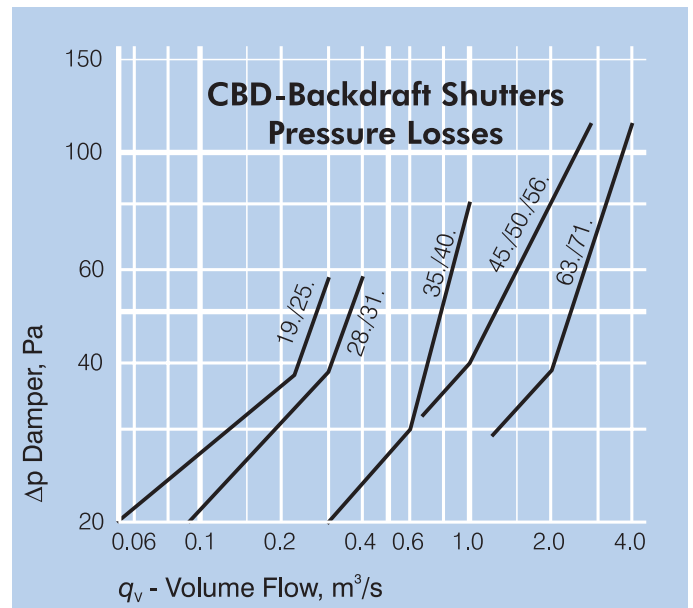
For high temperature applications the flaps can be fabricated from galvanised steel. High temperature conditions must be nominated at the time of enquiry.

These are supplied as standard for twin fan units, for which they are an essential item to ensure there is no short-circuiting of the airstream.

They are an optional extra for single fan units.

The pressure loss through the dampers must be added to the system resistance before selecting the fan.

Pressure Losses



Selection Table

Gamma Model CD./CE..	Gamma Model CD/E..GL	Heritage Model CHD../CHE..	Minivent Model MV..	Backdraft Shutter Part No.
19./25.	-	-	-	CBD-A
28./31.	31.	31.	20./25./30.	CBD-B
35./40.	35./40.	35./40.	354	CBD-C
45./50./56.	45./50./56.	45./50./56.	-	CBD-D
63./71.	63./71.	63./71.	-	CBD-E

ANCILLARY EQUIPMENT

BACKDRAFT DAMPERS

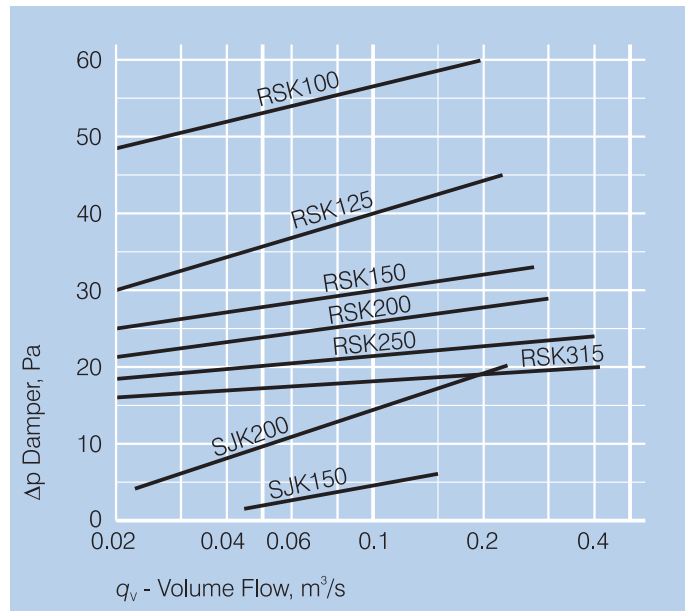
Features

The RSK backdraft dampers are manufactured from steel with spring actuated aluminium flaps.

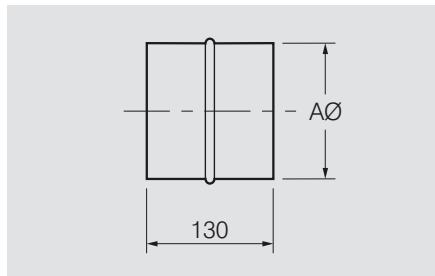
The patented SJK Smooth Flow backdraft dampers are constructed from injection moulded plastic designed with a low resistance gravity damper.

Both dampers form an excellent seal against backdraft when the fans are switched off. The SJK Smooth Flow damper has the lowest resistance of the two models. The pressure loss through the backdraft dampers has to be added to the system resistance before selecting the fan.

Damper Pressure Losses

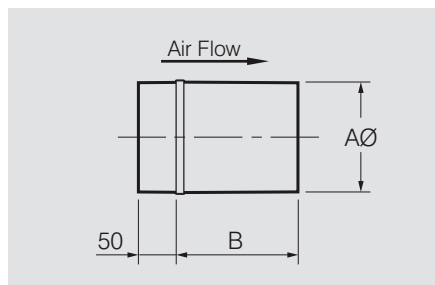


RSK - Backdraft Dampers



Backdraft Dampers Part No.	Dimensions, mm AØ
RSK100	100
RSK125	125
RSK150	150
RSK200	200
RSK250	250
RSK315	315

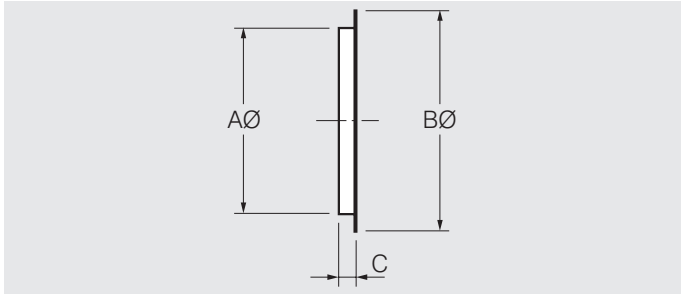
SJK - Backdraft Dampers



Backdraft Dampers Part No.	Dimensions, mm AØ B	
SJK150	150	161
SJK200	200	211

ANCILLARY EQUIPMENT

MF/CMF - AXIAL FAN MATCHING FLANGES



Features

Matching flanges are of spun or rolled galvanised steel, with holes punched to match the fan's flanges.

They provide a spigot for the attachment of flexible connections or ductwork.

Dimensions & Selection Table

Flanges For Axial Flow Fans

Axial Fans Model*	Matching Flange Part No.	Dimensions, mm		
		AØ	BØ	C
031.	MF030	315	385	30
040.	MF040	400	487	30
050.	MF050	500	595	30
056.	MF056	560	655	30
063.	MF063	630	725	30
071.	MF071	710	810	50
080.	MF081	800	900	50
100.	MF100	1000	1100	50
125.	MF125	1250	1350	50
140.	MF140	1400	1530	50
160.	MF160	1600	1730	50
180.	MF180	1800	1930	50
200.	MF200	2000	2130	50

* Suits AP, APS, APB, BFA axial fans and associated attenuators.

Flanges For Short Case Axial Fans

Short Case Model	Matching Flange Part No.	Dimensions, mm		
		AØ	BØ	C
SC.25.	CMF025	260	318	25
SC.31.	CMF031	315	380	25
SC.35.	CMF035	355	425	25
SC.40.	CMF040	400	463	25
SC.45.	CMF045	450	519	25
SC.50.	CMF050	500	567	25
SC.56.	CMF056	560	644	25
SC.63.	CMF063	630	721	25

Flanges For Flameproof Duct Fans

Flameproof Miniduct Model	Matching Flange Part No.	Dimensions, mm		
		AØ	BØ	C
FPMD25	CMF025	260	318	25
FPMD30	CMF030	310	368	25
FPMD35	CMF035	355	425	25
FPMD40	CMF040	400	463	25

POW - POWERLINE/MULTIFLOW MATCHING FLANGES



Selection Table

PowerLine® Centrifugal In-line Model PCD../PCE..	Multiflow Mixed Flow In-line Model MMD../MME..	Matching Flange Part No.
31.	31.	POW31MF
35.	35.	POW35MF
40.	40.	POW40MF
45.	45.	POW45MF
50.	50.	POW50MF
56.	56.	POW56MF
63.	63.	POW63MF
71.	-	POW71MF
-	80.	POW80MF

Features

In-line matching flanges are designed to match the end flanges of the PowerLine® and Multiflow units. The actual dimensions are detailed with the fans.

The flanges are folded galvanised steel.

ANCILLARY EQUIPMENT

FLX - FLEXLINE® MATCHING FLANGES



Features

FlexLine® matching flanges are designed to match the discharge of the FlexLine® fans.

The flanges are folded galvanised steel.

Selection Table

FlexLine® Model FLD../FLE..	Matching Flange Part No.
31.	FLX31MF
35.	FLX35MF
40.	FLX40MF
45.	FLX45MF
50.	FLX50MF
56.	FLX56MF
63.	FLX63MF
71.	FLX71MF

FC - FAST CLAMPS



Features

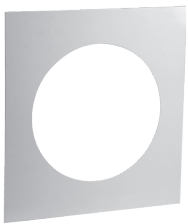
Fast clamps are a very simple and effective means of connecting ductwork to fans with spigot connections. They also make access for service and cleaning very easy and should be securely fastened with two bolts.

Manufactured from 60mm wide galvanised steel with an insulated neoprene pad glued to the inside surface. This pad works extremely well both as a vibration absorber and as a noise suppressor.

Normally two fast clamps are required per fan and the table below details which fast clamp fits each fan.

For sizes and codes please contact your local sales office.

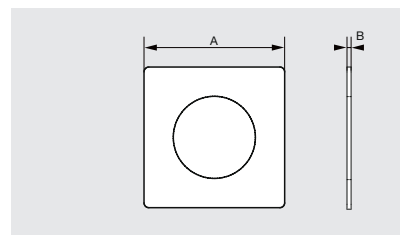
RG - RUBBER GASKET



Features

This gasket is used to ensure a tight seal can be achieved when installing a fan in the ceiling or wall. It is made of EPDM rubber to guarantee the IPX4 degree of protection against moisture.

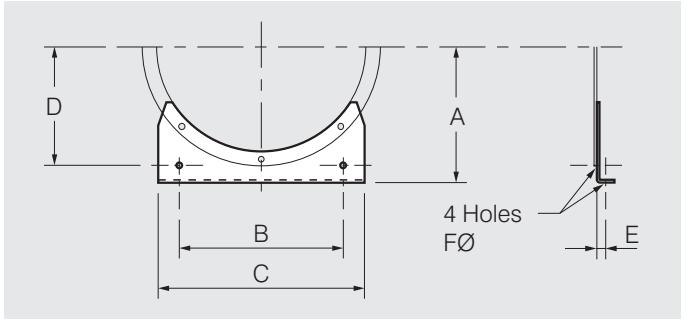
Dimensions



Model No.	Dimensions, mm	
	AØ	B
RG100	173	5
RG120	196	5
RG150	230	5

ANCILLARY EQUIPMENT

F/CFT - AXIAL FAN MOUNTING FEET



Features

All feet are galvanised steel and designed to support the fan and/or attenuator horizontally.

Should the installation require the fans to be installed in a vertical plane please contact Elta.

Bolt-on feet are generally supplied loose in pairs.

Dimensions & Selection Table

Feet For Axial Flow Fans

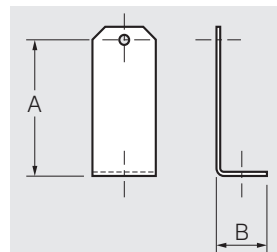
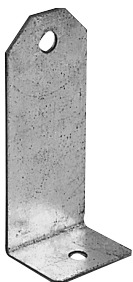
Axial Fans Model*	Mounting Feet Part No.	Dimensions, mm						FØ
		A	B	C	D	E		
031.	F031	200	265	315	180	25	13	
040.	F040	250	350	400	230	25	13	
050.	F050	315	450	500	290	25	13	
056.	F056	355	510	560	330	25	13	
063.	F063	400	580	630	375	25	13	
071.	F071	450	660	710	425	25	13	
080.	F080	500	750	800	475	25	13	
100.	F100	630	950	1000	595	50	15	
125.	F125	780	1200	1250	745	50	15	
140.	F140	813	1300	1400	773	50	15	
160.	F160	950	1500	1600	900	50	15	
180.	F180	1050	1700	1800	1000	50	15	
200.	F200	1150	1900	2000	1100	50	15	

* Suits AP, APS, APB, BFA axial fans and associated attenuators.

Feet For Short Case Axial Fans

Short Case Model	Mounting Feet Part No.	Dimensions, mm						FØ
		A	B	C	D	E		
SC.25.	CFT025	175	190	250	160	25	13	
SC.31.	CFT031	216	255	315	201	25	13	
SC.35.	CFT035	238	255	355	218	25	13	
SC.40.	CFT040	267	300	400	247	25	13	
SC.45.	CFT045	285	350	450	265	25	13	
SC.50.	CFT050	316	400	500	296	25	13	
SC.56.	CFT056	391	460	560	371	25	13	
SC.63.	CFT063	427	530	630	407	25	13	

FT - IN-LINE MOUNTING FEET



Features

In-line mounting feet are designed to support the assemblies in a horizontal plane. If feet are required to support the fans in a vertical plane please contact Elta.

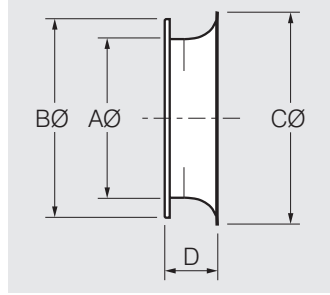
Four pieces make up a set.

Dimensions & Selection Table

PowerLine® Model PCD/E...	Multiflow Model MMD/E...	In-line Foot Part No.	Dimensions, mm	
			A	B
31./50.	31./50.	FT2	105	40
56./71.	56./80.	FT3	120	60

ANCILLARY EQUIPMENT

IC/CIC - INLET CONES FOR AXIAL FANS



See below for flange drilling detail

Features

Elta inlet cones are of an exponential shape which optimises the fans' performance and minimises noise generation.

The inlet cones for axial flow fans are made from galvanised steel. Inlet cones for short case axial fans are made from powder-coated spun steel.

Finger guards are available as an optional extra.

Dimensions & Selection Table

Inlet Cones For Axial Flow Fans

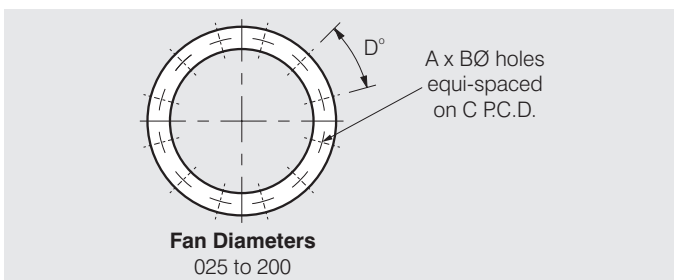
Axial Fans Model*	Inlet Cone Part No.	Dimensions, mm			
		AØ	BØ	CØ	D
031.	IC031S	316	383	409	83
040.	IC040S	400	488	505	95
050.	IC050S	501	597	622	109
056.	IC056S	561	659	683	121
063.	IC063S	630	730	805	125
071.	IC071S	722	803	910	154
080.	IC080S	800	885	965	145
100.	IC100S	1000	1110	1190	175
125.	IC125S	1250	1385	1460	205
140.	IC140S	1400	1540	1645	250
160.	IC160S	1600	1750	1900	265
180.	IC180S	1800	1950	2100	295
200.	IC200S	2000	2150	2192	295

* Suits AP, APS, APB, BFA axial fans and associated attenuators.

Inlet Cones For Short Case Axial Fans

Short Case Model	Inlet Cone Part No.	Dimensions, mm			
		AØ	BØ	CØ	D
SC.31.	CIC031S	315	380	410	80
SC.35.	CIC035S	355	425	482	88
SC.40.	CIC040S	400	463	503	95
SC.45.	CIC045S	450	519	600	95
SC.50.	CIC050S	500	567	618	105
SC.56.	CIC056S	560	644	690	115
SC.63.	CIC063S	630	721	805	135

Flange & Inlet Cone Drilling Dimensions



Short Case Axial & Flameproof Duct Fans

Fan Model	A	BØ	C	D deg.
025	8	8	285	45
030	8	8	340	45
031	8	10	356	45
035	8	10	395	45
040	12	10	438	30
045	12	10	487	30
050	12	10	541	30
056	16	10	605	22.5
063	16	10	674	22.5

These dimensions apply to SCD/E and FPMD fans.

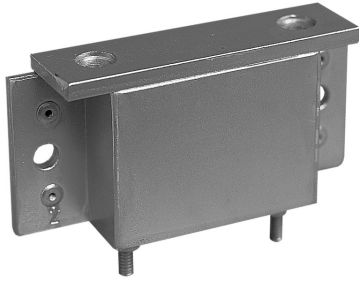
Axial Flow Fans

Axial Flow Fan Model	A	BØ	C	D deg.
031	8	13	355	45
035	8	13	395	45
040	8	13	450	45
045	8	13	500	45
050	12	13	560	30
056	12	13	620	30
063	12	13	690	30
071	16	13	770	22.5
080	16	13	860	22.5
100	16	13	1070	22.5
125	20	17	1320	18
140	20	17	1470	18
160	24	17	1680	15
180	24	17	1880	15
200	24	17	2080	15

These dimensions apply to AP, APS, APB and BFA fans, inlet cones and associated circular attenuators.

ANCILLARY EQUIPMENT

MAGLOK®



Description

Maglok® is a patented device which eliminates the annoying banging of butterfly shutters on 'HC', 'SS' and some New Generation* style vertical discharge axial roof ventilators. It also helps protect against rain ingress due to stack effect or wind action that may cause the shutters to lift open when the fan is not running.

Features

- Provides positive closure on various butterfly shutters.
- Compact size and has no moving parts.
- Is unaffected by heat and moisture.

Typical Applications

Ideal for installations in high wind areas or on buildings where the internal pressure, or stack effect causes the shutters to open when the fan is not running.

Construction

Maglok-2 and Maglok-5 utilise a specially selected rare earth magnet that is three and half times more powerful than ferrite. The housings are constructed from corrosion resistant aluminium, incorporate stainless steel adjustment screws and have long life corrosion protected striker plates.

Range

There are 2 models in the range: -

- * Maglok-2 1-2 kg range
- * Maglok-5 3-5 kg range

The holding force of both Magloks is fully adjustable within their load range.

Design

Depending on what holding force is selected, protection can be provided to the same integrity as the roof structure according to the requirements of AS1170.2 Wind Load Code.

How To Select

Generally speaking the maximum holding force available should govern selection.

The appropriate Maglok® can be selected from the graphs which show the minimum stall pressure which must be generated by the fan to open the butterfly shutters and the approximate wind speed a fan would be protected against.

The wind speed can be determined from a detailed study of the individual installation in accordance with AS1170.2.

Check the selected fan curve to ensure its pressure capacity is in excess of the stall pressure required. Between them, the Maglok-2 and -5 can be adjusted infinitely to provide any force from 1 to 5 kg providing a wide range of choice of stall pressures and wind loadings.

For fans of 800mm diameter either the Maglok-2 or -5 can be selected.

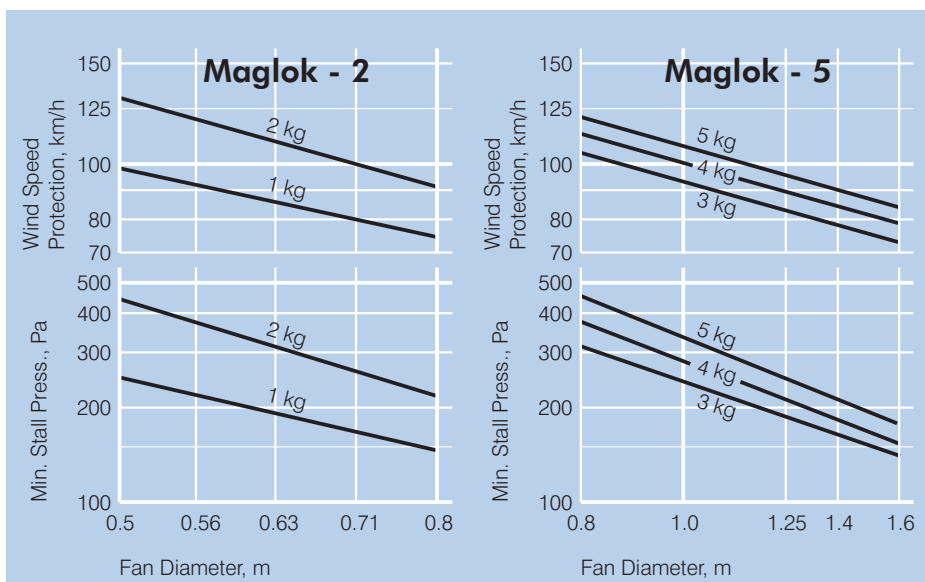
If the fan selected is less than 1000mm diameter and does not have sufficient stall pressure to overcome the 1kg loading, a Maglok® may not be a possible solution.

How To Order

Simply nominate the Maglok® model determined from the selection process and order accordingly.

* Please call our sales representative to confirm suitability for use on the New Generation Axial roof units.

Selection Graphs



ANCILLARY EQUIPMENT

FG - FINGER GUARDS

Guards For Type CF Compact Fans



Features

Finger guards come in a wide range of sizes to suit fans ranging from the CF Compact Fans through to the entire SQ and AP series.

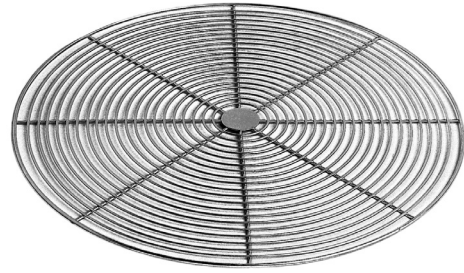
Some of the guards for the Compact Fan series can be supplied in either glass-reinforced plastic or steel.

See the table below for selections and materials of guards to suit Compact Fans.

Selection Table

Compact Fan Model	Finger Guard Part No.	Material
CF112	FG010P	Plastic
-	FG010S	Steel
CF132	FG013	Steel

Guards For Plate Mounted And Duct Fans



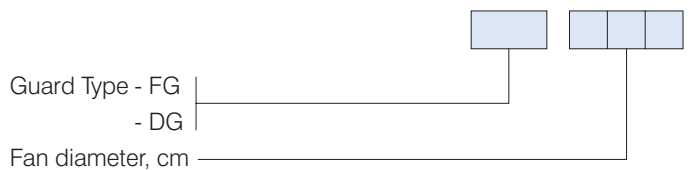
Features

Robustly-constructed steel guards are available for fixing to axial fan flanges or inlet cones, impeller side. Special guards to fit over motors can also be provided.

All steel components are galvanised or have a corrosion-resistant finish.

Fan installations must comply with Australian Standard AS4024.1801:2006 - Safety of Machinery: Safety distances and safety gaps.

How To Order



FG...
Suits AP, APS, APB, BFA & SQ axial fans.

DG...
Suits SCD/E Short Case Axial and CPD/E Compact 2000 plate mounted fans.

Contact Elta for further details.

MRJ - INLET GUARD



Features

The MRJ guards are specifically designed for mixed-flow in-line fans.

They prevent the entry of objects into the fan and can be fitted to the inlet or outlet of the fan.

Selection Table

Inlet Guard Part No.	Silent EcoWatt MixVent In-line Fan Models	ProVent In-line Fan Model
MRJ-250/100	TD-250/100..	RIL-100
MRJ-350/125	TD-350/125..	RIL-125
MRJ-500/150	TD-500/150..	RIL-150SW/RIL-150TSW
MRJ-800/200	TD-800/200(N)..	RIL-200SW/RIL-200TSW
MRJ-1300/250	TD-1300/250..	
MRJ-2000/315	TD-2000/315..	

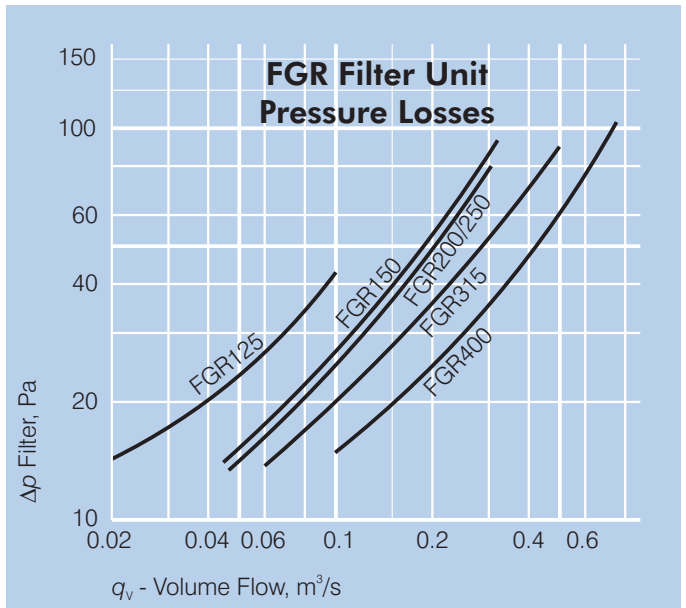
ANCILLARY EQUIPMENT

FGR - FILTER UNIT

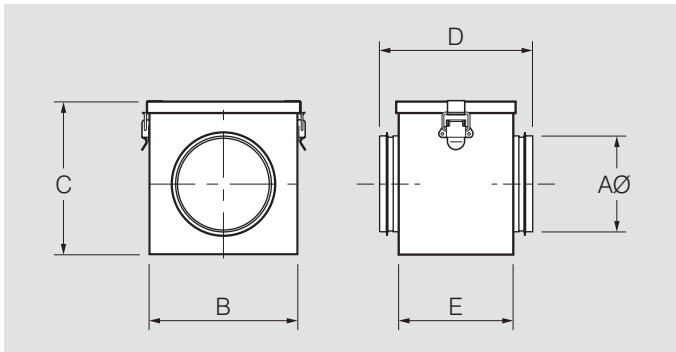


Features

The FGR filter units are fitted with a throw-away panel dust filter. The cassette is made of galvanised steel with rubber-sealed circular connections and the cover has quick-release latches. Table below indicates which filter fits on specific fan models. AS1132 No. 4 Test Dust
Average Arrestance - 85.3%



Dimensions

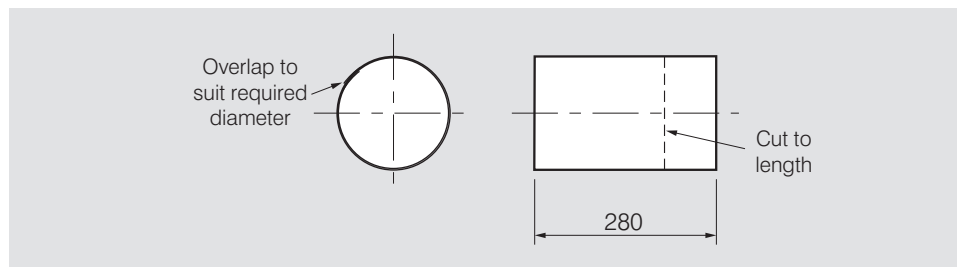


Filter Unit Part No.	Dimensions, mm				
	AØ	B	C	D	E
FGR125	125	200	200	220	122
FGR150	150	200	200	220	122
FGR200	200	245	245	230	122
FGR250	250	295	295	240	122
FGR315	315	345	345	240	122
FGR400	400	448	448	240	150

WT - WALL TUBES



Dimensions & Selection Table



Features

Wall tubes are designed for the wall mounting installation of a number of fan types. Wall tubes bridge the gap between the fan and the external louvre or shutter.

Constructed from robust flexible plastic, they are supplied to a standard length for cutting to the required size on site.

Minitube Model MTP/S	Ring Plate RP	Wall Tube Part No.	Spigot Dia. Range, mm
-	-	WT130PPK	100-130
-	-	WT130PPK	100-130
20.	20.	WT230PPK	150-230
-	-	WT230PPK	150-230
25.	25.	WT370PPK	250-370
30.	30.	WT370PPK	250-370
35.	35.	WT370PPK	250-370



Elta Asia Sdn Bhd

Tel **+603 7846 0340**

Email **info@elta.asia**

elta.asia

AE-01-2026 Issue A



FS 676456

A MEMBER OF  ELTA GROUP