

ANCILLARY EQUIPMENT

Accessories

ELTA



INTERNAL DUCT VALVES

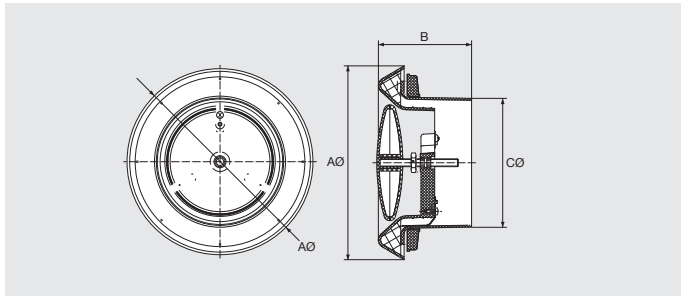
IPDV



Features

The IPDV grille is designed for external wall mounting. It is constructed from high quality plastic with a clean white finish. Airflow can be easily adjusted by rotating the centre control disc.

Dimensions



Model	Dimensions, mm		
IPDV...	AØ*	B	CØ
100	149	71.7	98
125	168	69	125
150	185	77.7	148

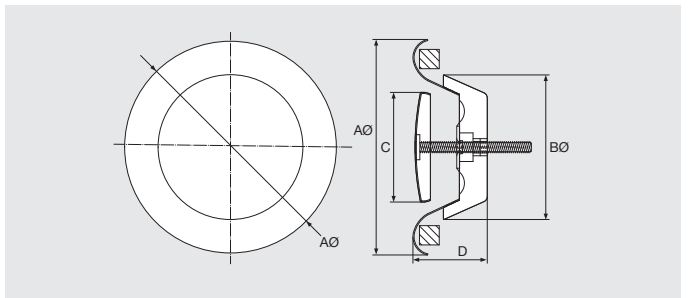
ISDV



Features

The ISDV grille is designed for external wall mounting. It is made from high quality steel with a clean white finish. The valve body is equipped with a mounting ring for ease of installation. Airflow can be easily adjusted by rotating the control disc.

Dimensions



Model	Dimensions, mm			
IDV...	AØ*	BØ	C	D
100	139.5	96	74	39
150	201	147.2	119.7	51

EXTERNAL GRILLES

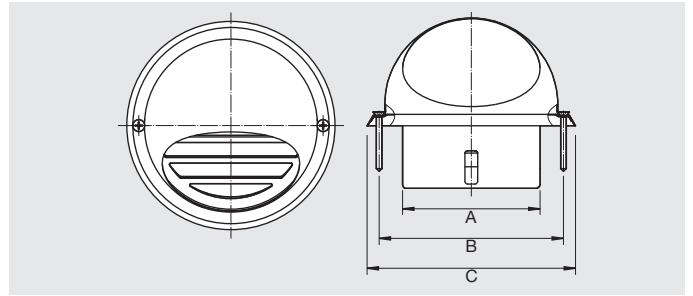
ESSHV



Features

The ESSHV grille is designed for external wall mounting. The stainless steel dome protects the unit against harsh elements and the included mesh screen prevents pests from entering. Perfect for extreme weather conditions. The valve body is equipped with a mounting gasket that forms an airtight seal.

Dimensions



Model	Dimensions, mm		
ESSHV...	AØ*	B	C
100	96	130	147
125	120	165	187
150	145	189	210
200	195	253	273

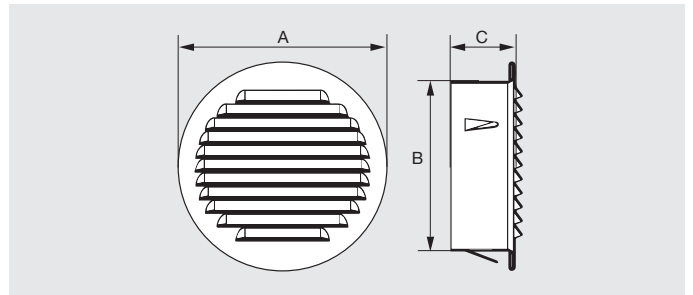
EAGM



Features

The EAGM grille is designed for external wall mounting. The grille is made of pressed aluminium which protects against harsh elements. It comes with an aluminium mesh screen that prevents pests from entering. Perfect for extreme weather conditions.

Dimensions



Model	Dimensions, mm		
EAGM...	AØ*	BØ	C
100	128	98	47
125	153	123	47
150	178	148	47
200	228	198	47

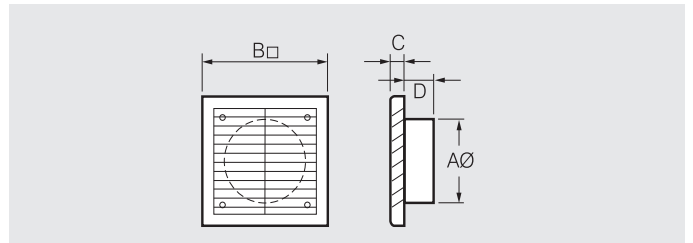
EPGM



Features

The EPGM grille is designed for external wall mounting. It has been made to withstand harsh outdoor conditions. The grille is made from impact and UV resistant PVC. It comes with an aluminium mesh screen that prevents pests from entering.

Dimensions



Model	Dimensions, mm			
EPGM...	AØ	B□	C	D
100	99	155	16	29
125	124	155	16	28
150	150	186	17	37
200	200	285	25	50

BACKDRAFT SHUTTERS

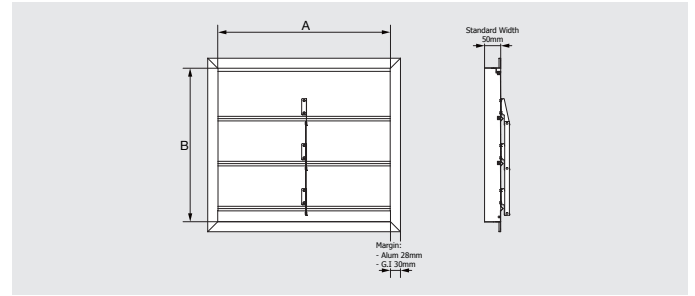
EMGB-HPA



Features

The EMGB-HPA backdraft shutter is designed for external mounting specifically with the HPA fan. It is made strong and lightweight from aluminium and galvanised steel. Shutters open when the fan is running and close when it is off. This allows air to be ventilated into the atmosphere from the inside of a building, while stopping outside air and pests from entering the building when the fan is off.

Dimensions



How To Order

The EMGB-HPA backdraft shutter's width (A) and height (B) is made custom fit for your size requirements. Please contact your local office for more information.

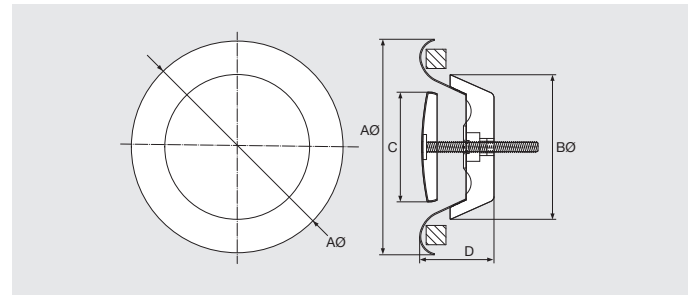
EPGB



Features

The EPGB backdraft shutter is designed for external mounting. It is made from impact and UV resistant PVC. Shutters open when the fan is running and close when it is off. This allows air to be ventilated into the atmosphere from the inside of a building, while stopping outside air and pests from entering the building when the fan is off.

Dimensions



Model IDV...	Dimensions, mm			
	AØ*	BØ	C	D
100	139.5	96	74	39
150	201	147.2	119.7	51

WINDOW KITS

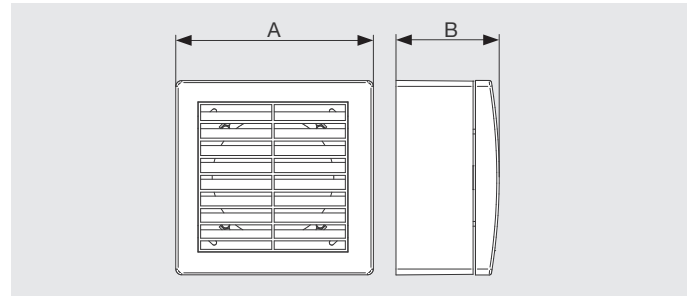
WKG



Features

The WKG is a window kit designed to be used when installing a fan in the window. This includes an external fixed grille that is made from impact and UV resistant RAL9010. It is recommended to be used in combination with fans that don't have shutters.

Dimensions



Model WKG...	Dimensions, mm		Ø foro vetro
	A	B	
100	164	87	120
125	184	100	141
150	210	141	178

Glass thickness from 2 to 35mm

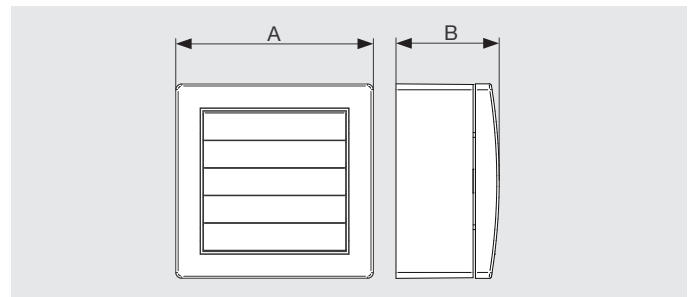
WKS



Features

The WKS is a window kit designed to be used when installing a fan in the window. This includes an external grille with gravity shutters that is made from impact and UV resistant RAL9010. It is recommended to be used in combination with fans that don't have shutters. The shutters open automatically when the airflows through the unit. When the fan is off they close down so to prevent air and insects entering from outside.

Dimensions



Model WKS...	Dimensions, mm		Ø foro vetro
	A	B	
100	164	87	120
125	184	100	141
150	210	141	178

Glass thickness from 2 to 35mm

INTERNAL CEILING GRILLES - TYPE RITEVENT RCG



RCG150



RCG150SQWH



RCG200-150

Description

The Ritevent ceiling grilles feature a unique spigot that can be fitted for horizontal or vertical oriented duct connection, making them suitable for narrow ceiling voids such as between floors or within cathedral ceilings. They work in conjunction with roof, in-line or external wall mounted fans in domestic and light commercial applications and feature a modern, low resistance grille.

Features

- Spigot can be fitted horizontally or vertically.
- Models RCG150 and RCG150SQWH are an ideal retrofit for 10" round fan cutout. RCG200-150 is an ideal retrofit for 8" round fan cutout.
- Oval spigot allows 150mm duct to be connected.
- Easily installed into plasterboard and suspended ceilings.
- Easy to remove and clean grille.
- Grille with RCG150SQWH can be rotated to align with walls.

Typical Applications

Installed in conjunction with a duct, roof or external wall mounted fan in toilets, bathrooms, laundries, kitchens and ensuites.

Construction

Grille is of injection-moulded ABS plastic. Cushion head box and spigot are of polyethylene for the RCG200-150 and polypropylene for the RCG150.

Testing

Airflow tests based on ISO5801:2007

Suggested Specification

The ceiling grilles shall be of the Ritevent Series as supplied by Elta and be of the model number shown on the schedule/ drawing.

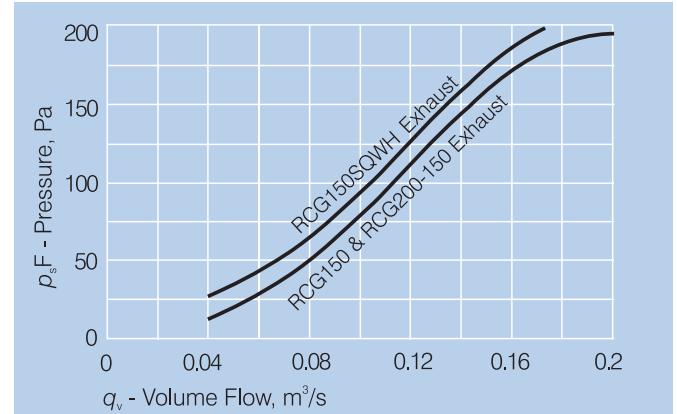
Spigot can be fitted for horizontal or vertical duct connection.

Its grille shall be manufactured from injection-moulded ABS plastic. It shall include an oval spigot that is suitable for 150mm duct. Grilles shall be tested to ISO5801:2007 for airflow.

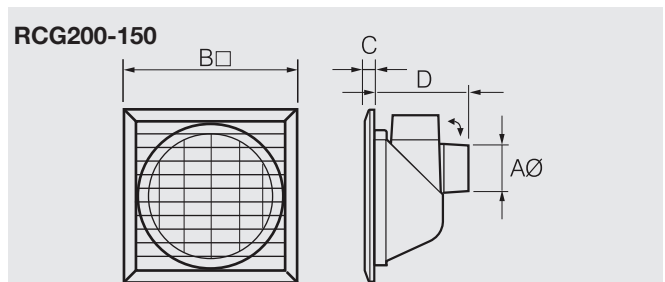
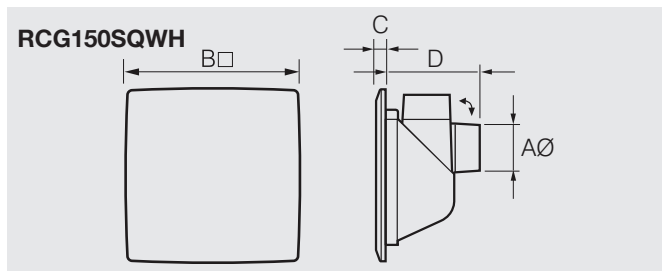
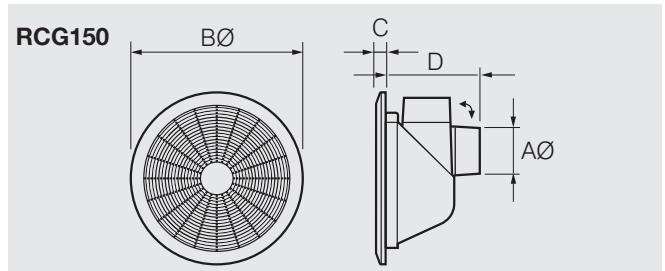
How To Order

Select the grille to suit the dimensions of the plasterboard hole or preference of grille style.

Pressure Loss Graph



Dimensions



Model RCG...	Dimensions, mm				Hole Cutout Ø
	AØ*	B	C	D	
150	150	Ø350	19	140	290
150SQWH	150	□ 353	30	140	290
200-150	150	□ 295	22	140	250

*Nominal duct diameter

RESPONSE SERIES - GRILLES

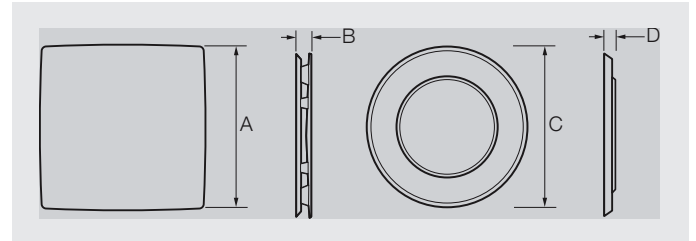
GRILLES



Features

The Response Grilles are quick and easy to install, have a contemporary design and are available in a white or black finish.

Dimensions



Model	Dimensions, mm			
	A	B	C	D
SRG100SW	300	24	-	-
SRG100RW	-	-	294	19
RG150SW	353	30	-	-
RG150RW	-	-	332	24

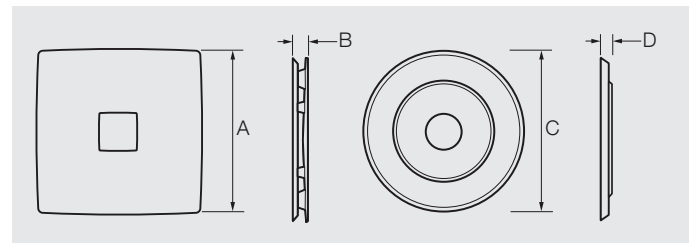
GRILLES WITH LED



Features

The Response Grilles with LED will brighten up any bathroom, ensuite or toilet. Featuring an LED light in the centre which can be controlled separately to the fan itself. Stylish, modern design to suit any setting. Available in white or black finish.

Dimensions



Model	Grille	Lumens (LM)	Input Power (W)	Colour Temp (K)	Beam Angle (°C)
SRG100/RF150					
RW-LED	Round	800	9	4200	180
SW-LED	Square	1000	12	4200	180

Model	Dimensions, mm			
	A	B	C	D
SRG100SW-LED	300	24	-	-
SRG100RW-LED	-	-	294	19
RG150SW-LED	353	30	-	-
RG150RW-LED	-	-	332	24



Elta Asia Sdn Bhd

Tel **+603 7846 0340**

Email **info@elta.asia**

elta.asia

LAG-01-2026 Issue A



FS 676456

A MEMBER OF  ELTA GROUP