



HPA

Installation & Maintenance

Installation Instructions

1.0 General

- 1.1 It is important these Installation and Maintenance Instructions are fully adhered to.
- 1.2 Full details of the unit supplied are shown on the product nameplate. If in doubt about any detail contact Elta Asia or its Agents for clarification.
- 1.3 All electrical installation must be carried out by suitably qualified and competent personnel in accordance with all current statutory requirements.
- 1.4 These instructions cover only the product and do not include the supply or installation of any safety equipment that may be required e.g. adequate guarding or protection from rotating parts and proper electrical isolation.
- 1.5 Any declarations made by Elta Asia about product installation and safety, are dependent on the fan equipment being used within installations which themselves meet the requirements of the relevant Standards and Directives of your region.
- 1.6 The fan is designed for use in an ambient temperature of up to 55°C and up to 95% relative humidity. The fan is not suitable for corrosive or explosive atmospheres.
- 1.7 The installer should provide easy access to the fan to facilitate future maintenance.
- 1.8 The installer should ensure the fan is adequately supported.
- 1.9 This product is not intended for use by young children or infirm persons unless they have been adequately supervised by a responsible person to ensure that they can use the product safely. Young children should be supervised to ensure that they do not play with the appliance.

2.0 Installation

WARNING – The fan must be isolated from the power supply during installation and maintenance. The fan must be earthed in accordance with the local regulations.

- 2.1 Upon receipt, the fan equipment should be visually inspected to check for any damage. Ensure that the impeller is free to rotate.
- 2.2 If there are any queries concerning the fan equipment, Elta Asia or its Agents should be contacted prior to the installation.
- 2.3 The fan must be securely mounted in the desired position to suit the application. The fan can be mounted at any angle.
- 2.4 Check the details on the motor rating plate to ensure that the correct power supply (voltage, frequency and phase) is available. An incorrect power supply will lead to permanent damage to the fan motor.
- 2.5 Refer to the appropriate wiring diagram. Ensure that all earth connections are made.
- 2.6 Means for electrical disconnection must be incorporated in the wiring installation in accordance with the relevant wiring and electrical regulations.
- 2.7 Precaution must be taken to locate the exhaust discharge terminal so as to avoid the backflow of gases into the room from the open flue of gas or other fuel burning appliances.
- 2.8 The fan equipment must be sited in an opening through a solid panel or a wall.
- 2.9 The size of the opening must not be less than C₁ (see Dimensions).
- 2.10 Allow 5-10mm space round the opening to facilitate positioning of the fan.
- 2.11 The plate has corner holes for mounting.
- 2.12 Use appropriate fixings e.g screws, bolts, washers, wall plugs etc. (not included) to secure the fan equipment.
- 2.12 It is recommended to maintain at least a 350mm distance between various parts of the fan and its surrounding structure/or and other installations.
- 2.13 A guard is not fitted on the impeller side. Where required or necessary the installer is responsible to install a suitable guard.
- 2.14 It is recommended that an appropriate isolator switch is fitted for safety during inspection or cleaning.
- 2.15 It is advisable that both the fan and the isolator switch are within reach and within sight of the electrician or competent person who performs the inspection or cleaning.
- 2.16 Connect the power from a wall switch or local isolator to the terminal box via an appropriate cable gland.
- 2.17 Check that the fan can rotate freely, before and after installation.
- 2.18 Consult a structural engineer or suitably qualified person if structure-related vibration is an issue.
- 2.19 Do not use the equipment if the installation is not secure and when it is not electrically and mechanically safe to do so.

Installation Instructions

3.0 Start Up

- 3.1 Before power is supplied to the unit, check that the wiring is correct as per the fan connection diagram.
- 3.2 At initial start-up, check that impeller rotation and airflow direction is correct.
- 3.3 Check that the motor amperage draw does not exceed the nameplate rating.

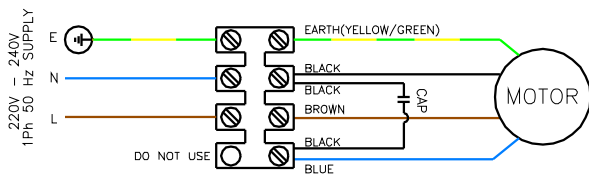
4.0 Fan Maintenance

- 4.1 Inspection of the fan at least once every 12 months is recommended to ensure that the motor, fan blades, and supporting guards, are clean. Any build up of dust and deposits on the blades or guards should be removed using a non-abrasive cleaner.
- 4.2 All fastenings should be checked for tightness. In addition, all rotating items should be checked.
- 4.3 Bearings are of the 'sealed for life' type and will not need a detailed inspection.

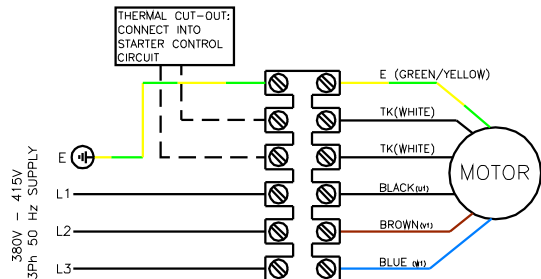
WARNING – This fan is fitted with an auto-reset thermal contact which switches the fan off in the event of a fault condition. Once the motor cools down the fan may start unexpectedly. Only a suitably qualified and competent person may carry out maintenance after the electrical supply has been isolated.

5.0 Guarantee

Elta Asia will, free of charge, within a period of 1 year from the date of dispatch from their works, repair or at its option replace any goods which are proved to have defects as a result of defective materials or workmanship. The goods MUST be returned to Elta Asia carriage paid for examination.

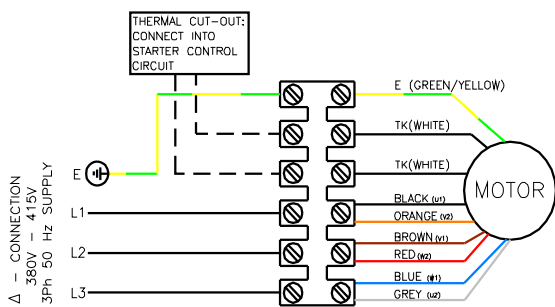


220-240V 1Ph 50Hz

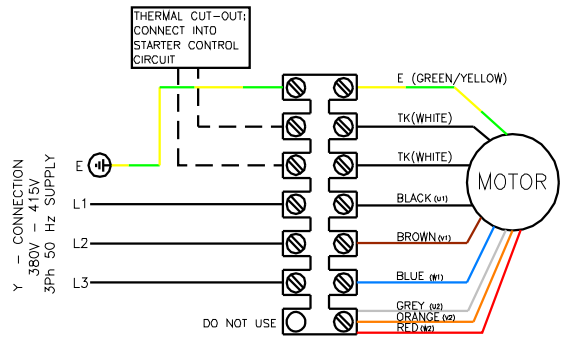


HPA THREE PHASE

400V 3PH 50Hz



HPA710 HIGH SPEED THREE PHASE ONLY

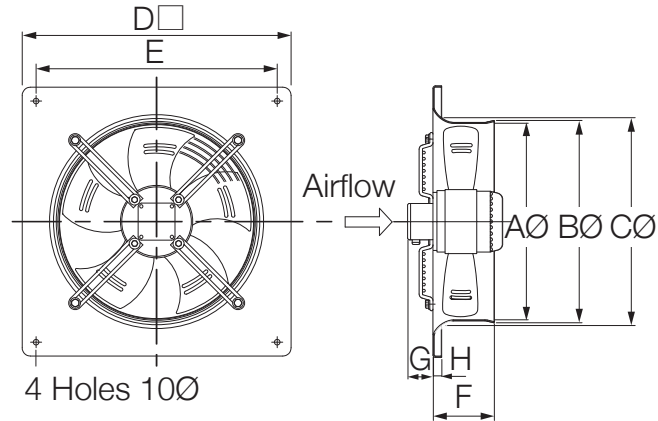


HPA710 LOW SPEED THREE PHASE ONLY

400V 3PH 50Hz

Dimensions

Please use the table(s) below to match up the product code and the wiring diagram number.



Product Code	A	B	C	D	E	F	G	H	Weight kg
HPA200/ * - * A	200	210	215	312	260	52	60	15	2.5
HPA250/ * - * A	250	260	265	370	320	90	60	15	3
HPA315/ * - * A	315	325	360	430	380	90	60	15	3.3
HPA350/ * - * A	350	360	395	485	435	90	60	15	4.9
HPA400/ * - * A	400	410	450	540	490	110	60	15	7.2
HPA450/ * - * A	450	460	500	575	535	110	60	15	7.2
HPA500/ * - * A	500	510	560	655	615	115	60	15	9.5
HPA560/ * - * A	560	575	625	725	670	115	60	15	10.5
HPA630/ * - * A	630	645	705	805	750	125	60	20	15
HPA710/ * - * A	710	722	765	850	810	130	135	27	30



Elta Asia Sdn Bhd

Tel **+603 7846 0340**

Email **info@elta.asia**

elta.asia

HPA-IM-05-2026 Issue A



FS 676456

A MEMBER OF  ELTA GROUP