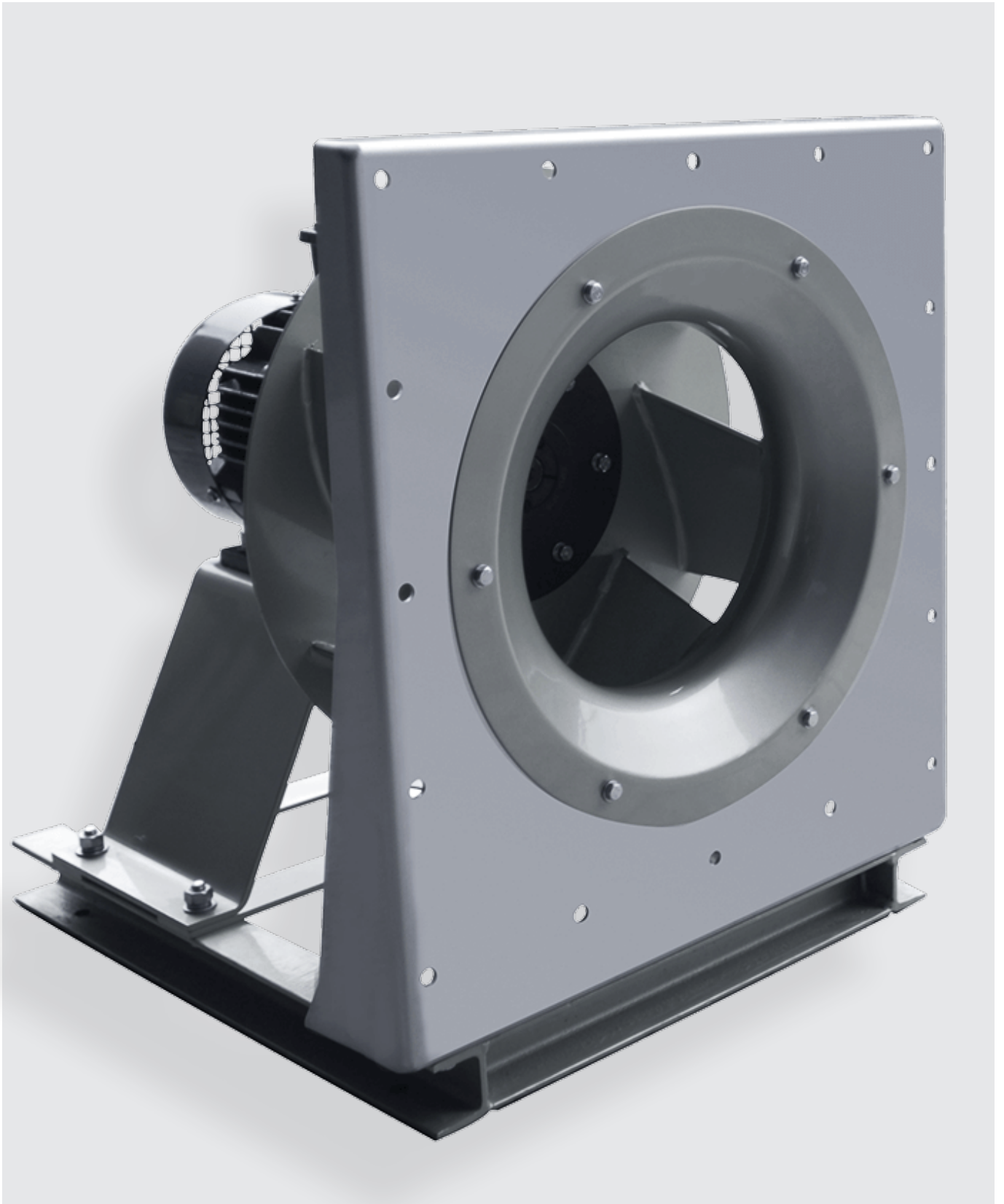


FTP

Centrifugal Plug Fan

ELTA

AMCA APPROVED



Product Overview

Description

FTP centrifugal plug fans

Licensed to bear the AMCA Seal for Sound and Air performance and Fan Efficiency Grade (FEG)

A total of 12 models

Ranging from 280mm to 1000mm

Air volume flow rates from 1000m³/h to 50,000m³/h

Backward-curved aerofoil impellers

Totally enclosed three-phase squirrel-cage induction motors

IP55 protection is standard, Class F insulation with Class B temperature rise

Operating ambient temperature of up to +40°C

Features

Compact, space-saving design

Made using advanced manufacturing techniques

Impeller has an aerodynamic profile; designed to achieve greater efficiency and lower noise level

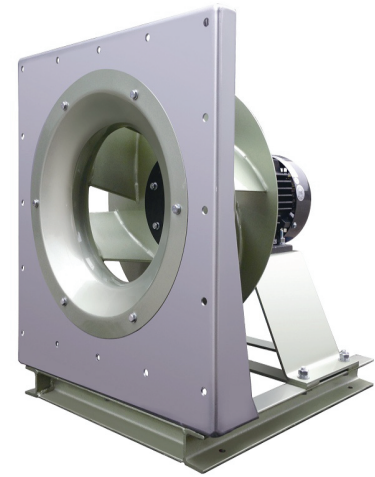
Impeller is made of high-grade steel or aluminium alloy

Hub is tapered sleeve or threaded shaft sleeve to ensure operating stability

Low power consumption

Thermal protection devices are available upon request

Elta Malaysia Sdn Bhd certifies that the FTP fans shown herein are licensed to bear the AMCA Seal. The ratings shown are based on tests and procedures performed in accordance with AMCA Publication 211 and AMCA Publication 311 and comply with the requirements of the AMCA Certified Ratings Program. All the Centrifugal Fans described herein are licensed to bear the AMCA Seal, and their certified ratings are shown on pages 4 through 15.



Product Coding

Code	Reference
FTP	Backward-curved aerofoil plug fan
630	Nominal Diameter (mm)
e.g.	FTP630

Typical applications

Central air-conditioning system

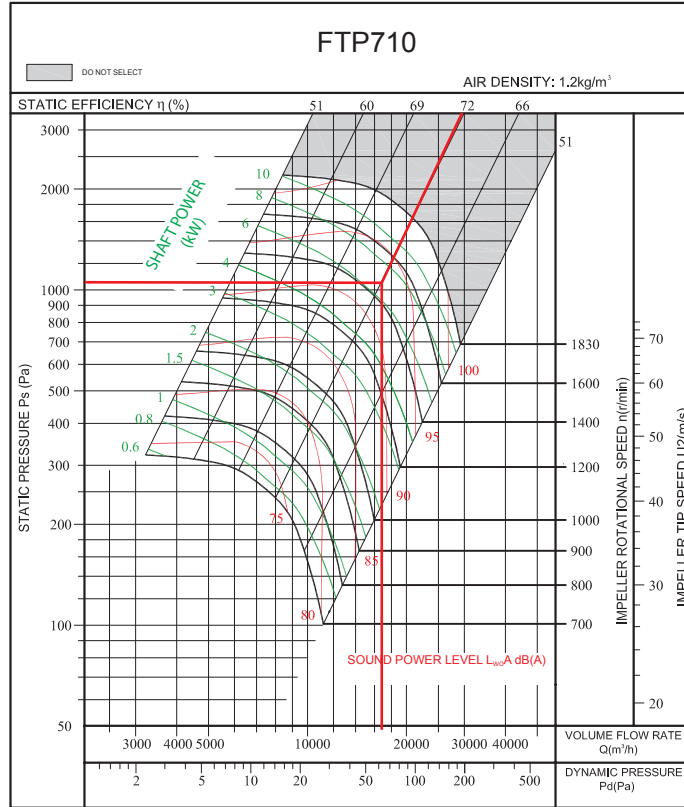
Air purification systems and a variety of ventilation applications

Not suitable for corrosive, inflammable, toxic or explosive environments



How to Select

Model	FTP710
Volume	$q_v=16553\text{m}^3/\text{h}$
Static Pressure	$P_{sF}=1030\text{Pa}$
Dynamic Pressure	$P_{dF}=61\text{Pa}$
Fan Speed	$n=1450\text{r}/\text{min}$
Shaft Power	$P_{sh}=6.571\text{KW}$
A Sound Power Level	$L_{WA}=96.8\text{dB(A)}$
Static Efficiency	$\eta_{sF}=72\%$

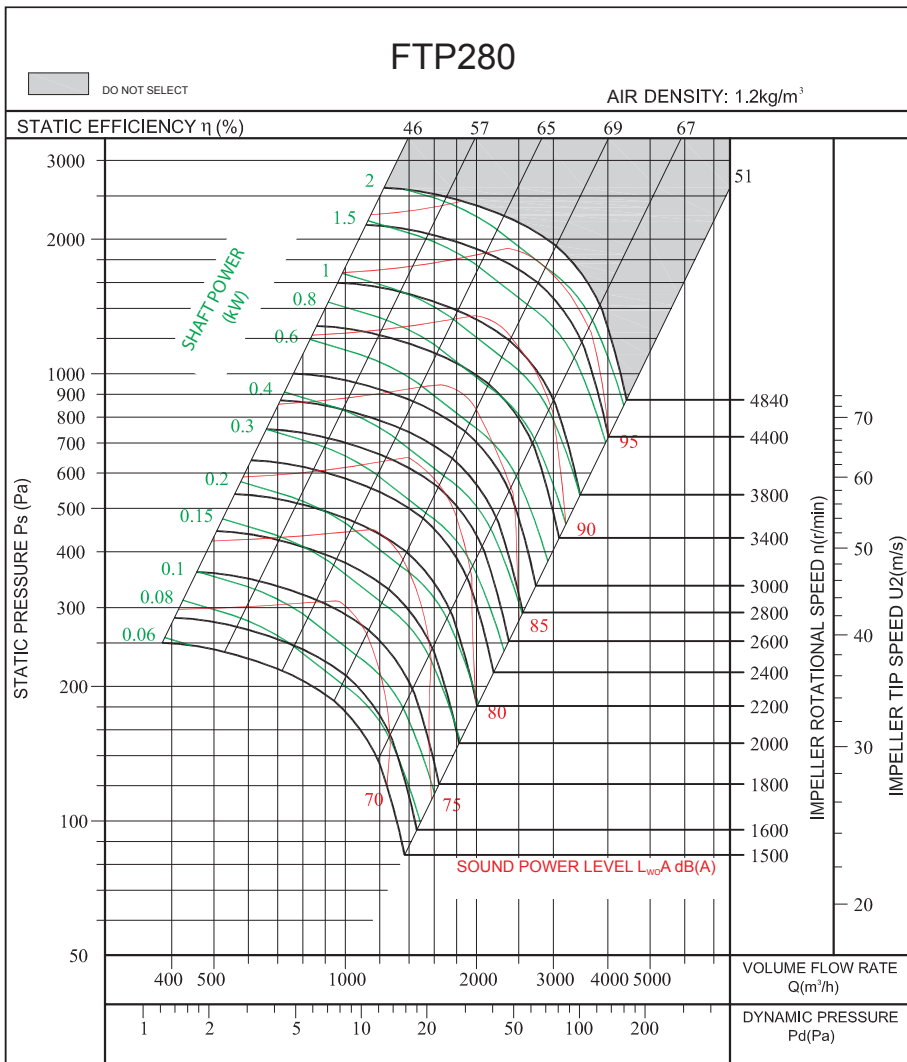


FTP280 FEG85

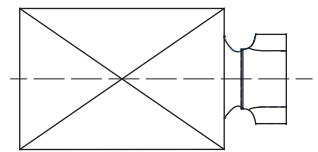
Technical Data & Performance Curve

Wheel diameter	D = 289 mm	Fan weight	m = 30 kg
Moment of inertia	J = 0.056 kg·m ²	Speed limit	n _{max} = 4840 r/min

Performance certified is for installation type A: free inlet, free outlet. Performance ratings do not include the effects of appurtenances (accessories). The A-weighted sound ratings shown have been calculated per AMCA International Standard 301. Values shown are for outlet L_wA sound power levels for installation type A: free inlet, free outlet.



Measured in installation A according to AMCA Standard 210:

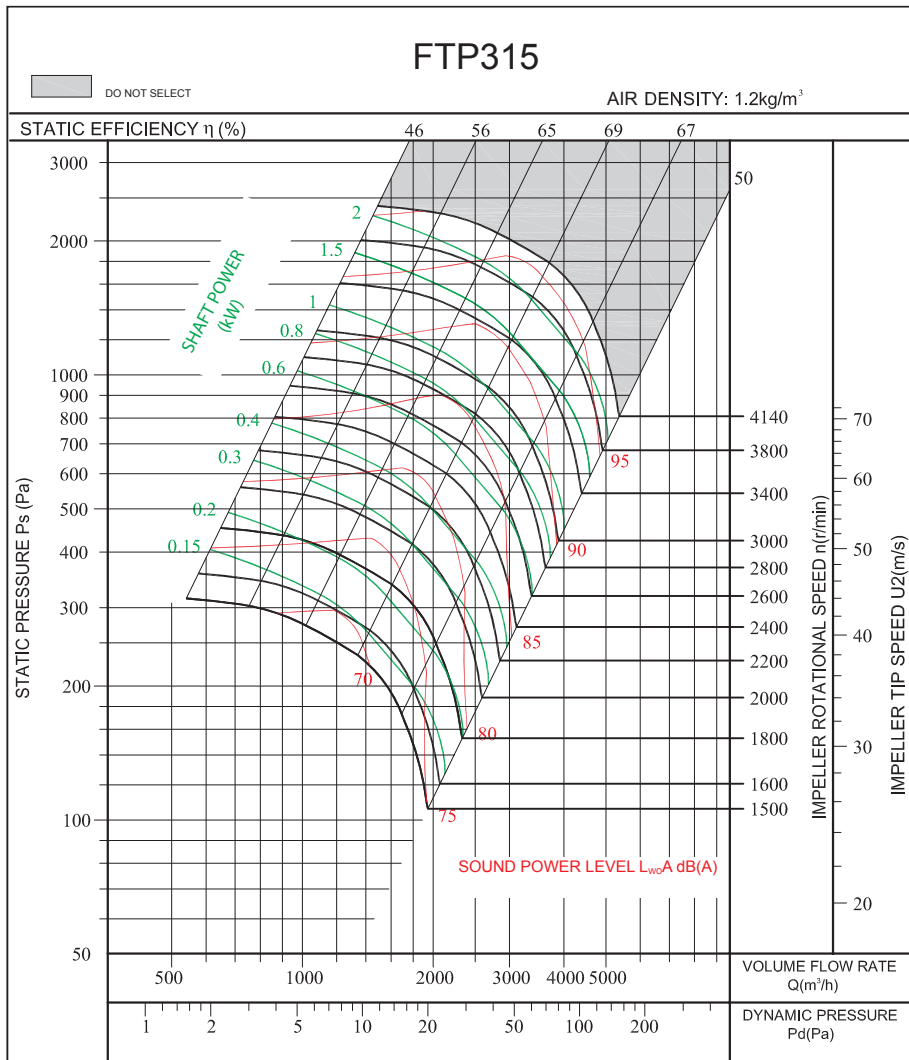


FTP315 FEG85

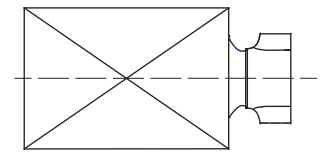
Technical Data & Performance Curve

Wheel diameter	D = 325 mm	Fan weight	m = 40 kg
Moment of inertia	J = 0.076 kg·m ²	Speed limit	n _{max} = 4140 r/min

Performance certified is for installation type A: free inlet, free outlet. Performance ratings do not include the effects of appurtenances (accessories). The A-weighted sound ratings shown have been calculated per AMCA International Standard 301. Values shown are for outlet L_wA sound power levels for installation type A: free inlet, free outlet.



Measured in installation A according to AMCA Standard 210:

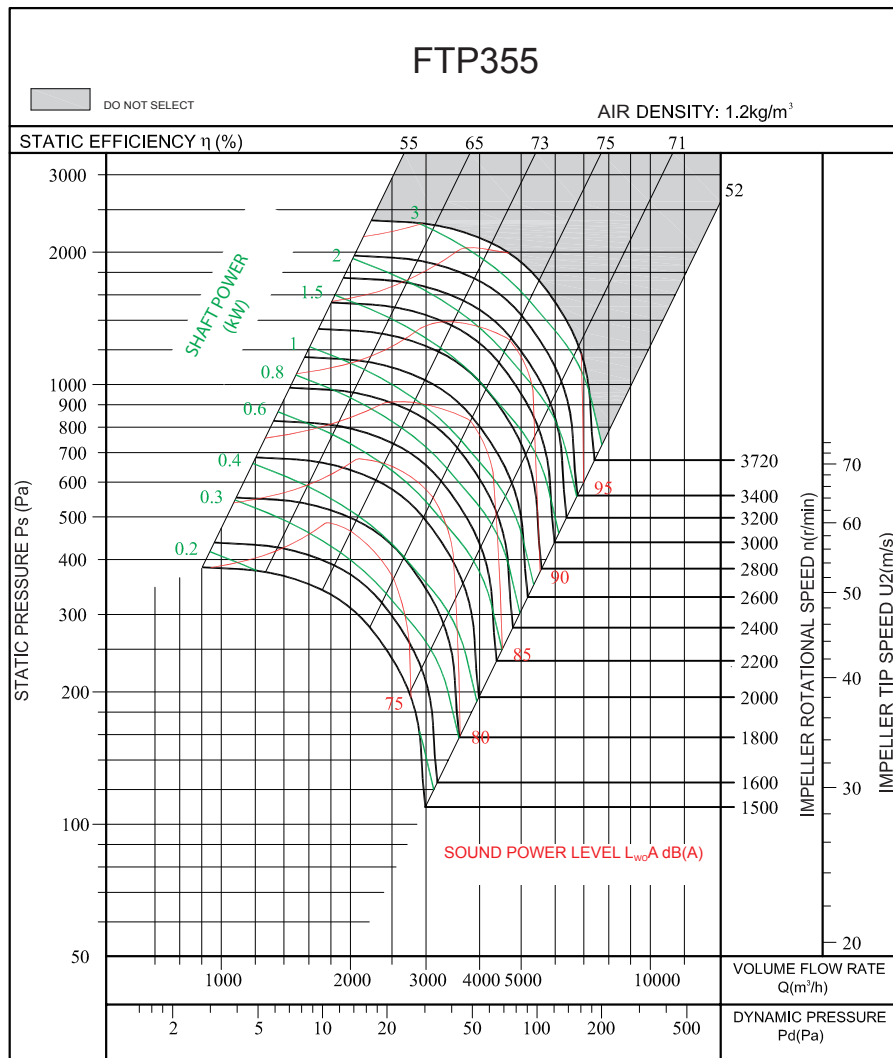


FTP355 FEG90

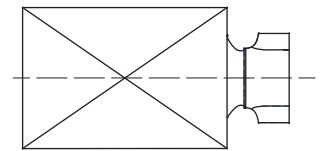
Technical Data & Performance Curve

Wheel diameter	D = 363mm	Fan weight	m = 45 kg
Moment of inertia	J = 0.136 kg·m ²	Speed limit	n _{max} = 3720 r/min

Performance certified is for installation type A: free inlet, free outlet. Performance ratings do not include the effects of appurtenances (accessories). The A-weighted sound ratings shown have been calculated per AMCA International Standard 301. Values shown are for outlet L_wA sound power levels for installation type A: free inlet, free outlet.



Measured in installation A according to AMCA Standard 210:

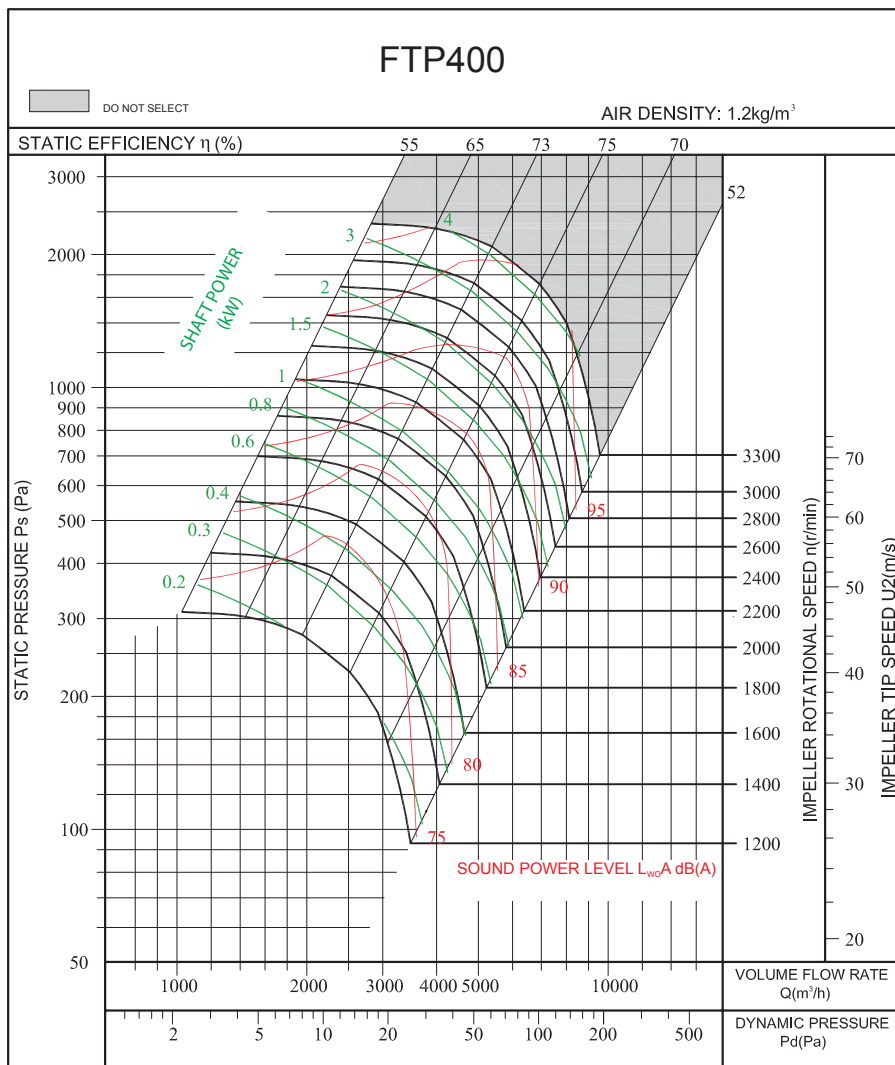


FTP400 FEG85

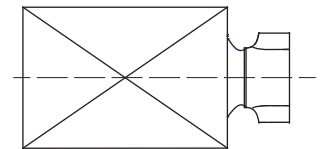
Technical Data & Performance Curve

Wheel diameter	D = 408 mm	Fan weight	m = 55 kg
Moment of inertia	J = 0.208 kg·m ²	Speed limit	n _{max} = 3300 r/min

Performance certified is for installation type A: free inlet, free outlet. Performance ratings do not include the effects of appurtenances (accessories). The A-weighted sound ratings shown have been calculated per AMCA International Standard 301. Values shown are for outlet L_{wc}A sound power levels for installation type A: free inlet, free outlet.



Measured in installation A according to AMCA Standard 210:

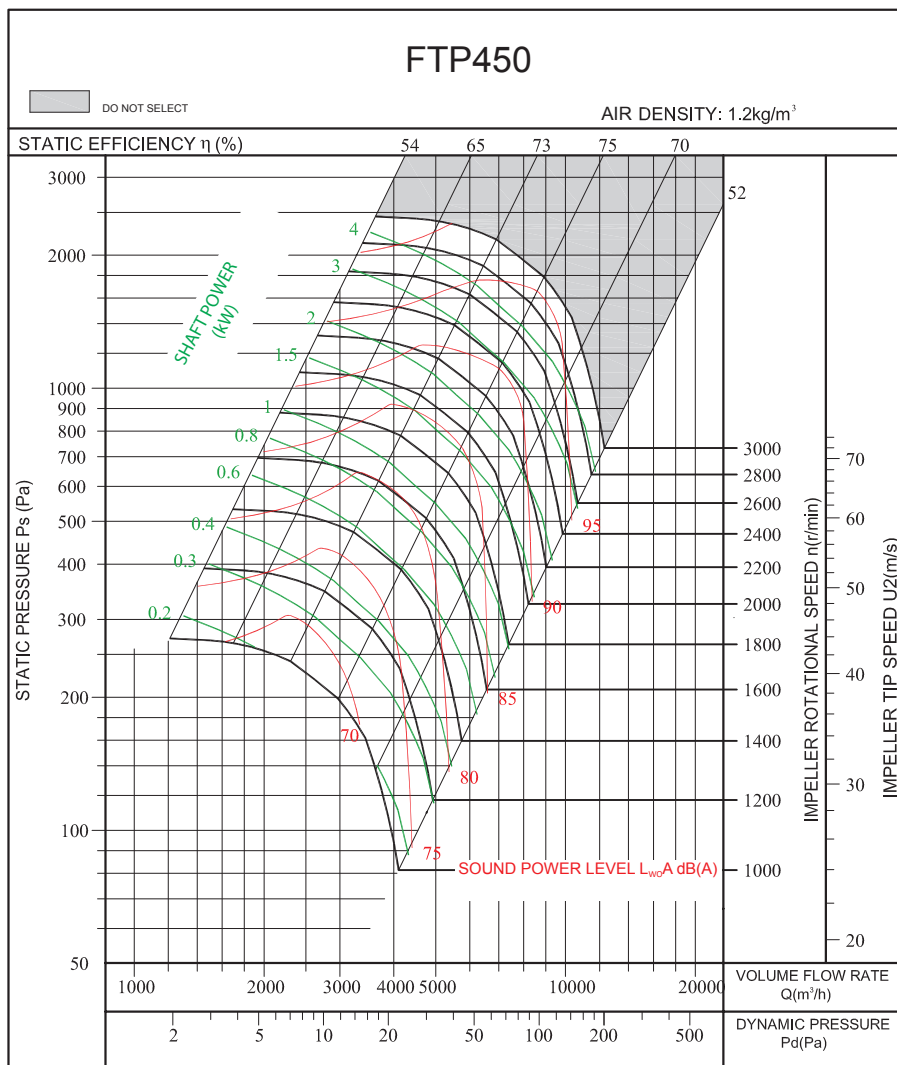


FTP450 FEG85

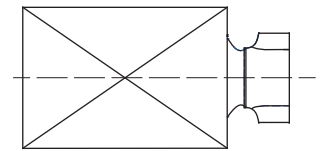
Technical Data & Performance Curve

Wheel diameter	D = 458 mm	Fan weight	m = 65 kg
Moment of inertia	J = 0.393 kg·m ²	Speed limit	n _{max} = 3000 r/min

Performance certified is for installation type A: free inlet, free outlet. Performance ratings do not include the effects of appurtenances (accessories). The A-weighted sound ratings shown have been calculated per AMCA International Standard 301. Values shown are for outlet L_wA sound power levels for installation type A: free inlet, free outlet.



Measured in installation A according to AMCA Standard 210:

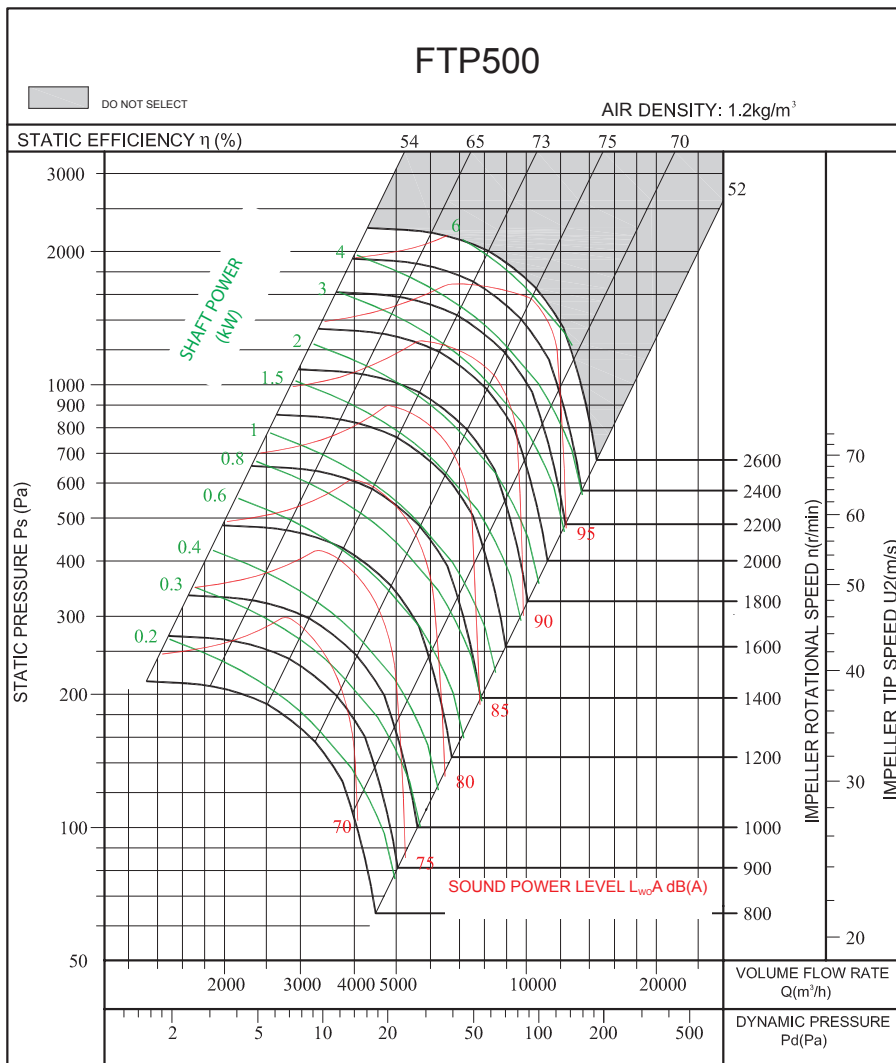


FTP500 FEG85

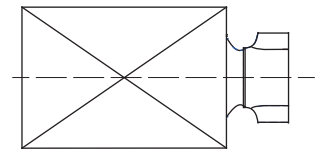
Technical Data & Performance Curve

Wheel diameter	D = 508 mm	Fan weight	m = 80kg
Moment of inertia	J = 0.567 kg·m ²	Speed limit	n _{max} = 2600 r/min

Performance certified is for installation type A: free inlet, free outlet. Performance ratings do not include the effects of appurtenances (accessories). The A-weighted sound ratings shown have been calculated per AMCA International Standard 301. Values shown are for outlet L_wA sound power levels for installation type A: free inlet, free outlet.



Measured in installation A according to AMCA Standard 210:

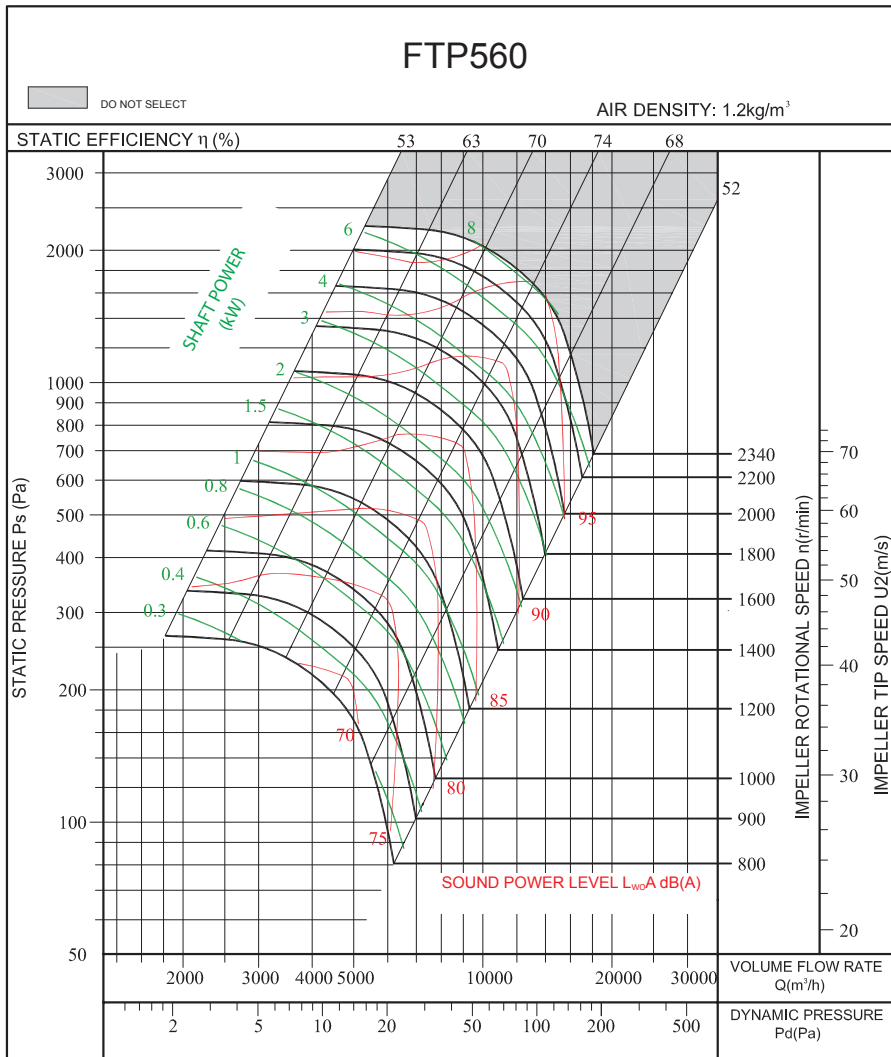


FTP560 FEG80

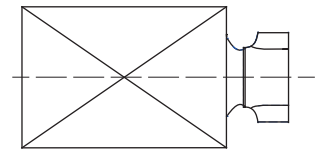
Technical Data & Performance Curve

Wheel diameter	D = 568 mm	Fan weight	m = 90 kg
Moment of inertia	J = 0.992 kg·m ²	Speed limit	n _{max} = 2340 r/min

Performance certified is for installation type A: free inlet, free outlet. Performance ratings do not include the effects of appurtenances (accessories). The A-weighted sound ratings shown have been calculated per AMCA International Standard 301. Values shown are for outlet L_wA sound power levels for installation type A: free inlet, free outlet.



Measured in installation A according to AMCA Standard 210:

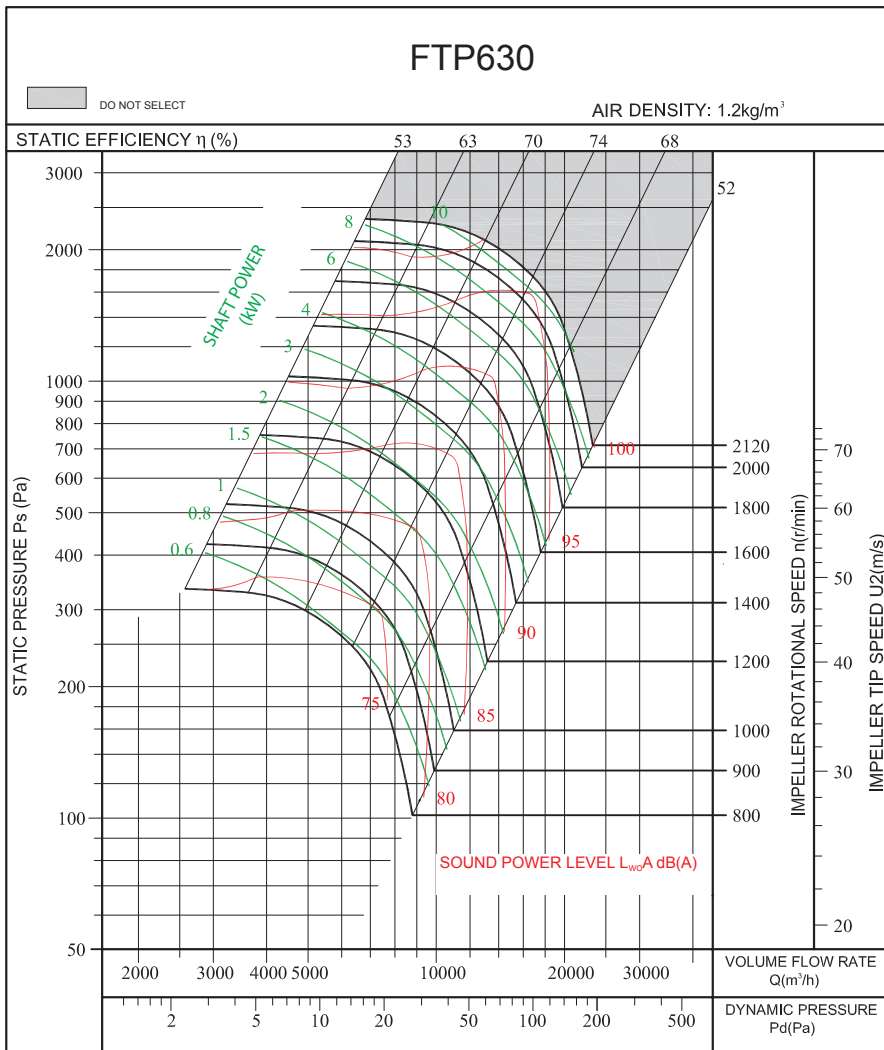


FTP630 FEG80

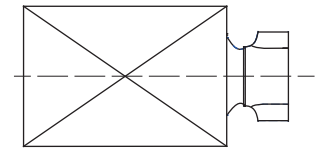
Technical Data & Performance Curve

Wheel diameter	D = 638 mm	Fan weight	m = 110 kg
Moment of inertia	J = 1.602 kg·m ²	Speed limit	n _{max} = 2120 r/min

Performance certified is for installation type A: free inlet, free outlet. Performance ratings do not include the effects of appurtenances (accessories). The A-weighted sound ratings shown have been calculated per AMCA International Standard 301. Values shown are for outlet L_wA sound power levels for installation type A: free inlet, free outlet.



Measured in installation A according to AMCA Standard 210:

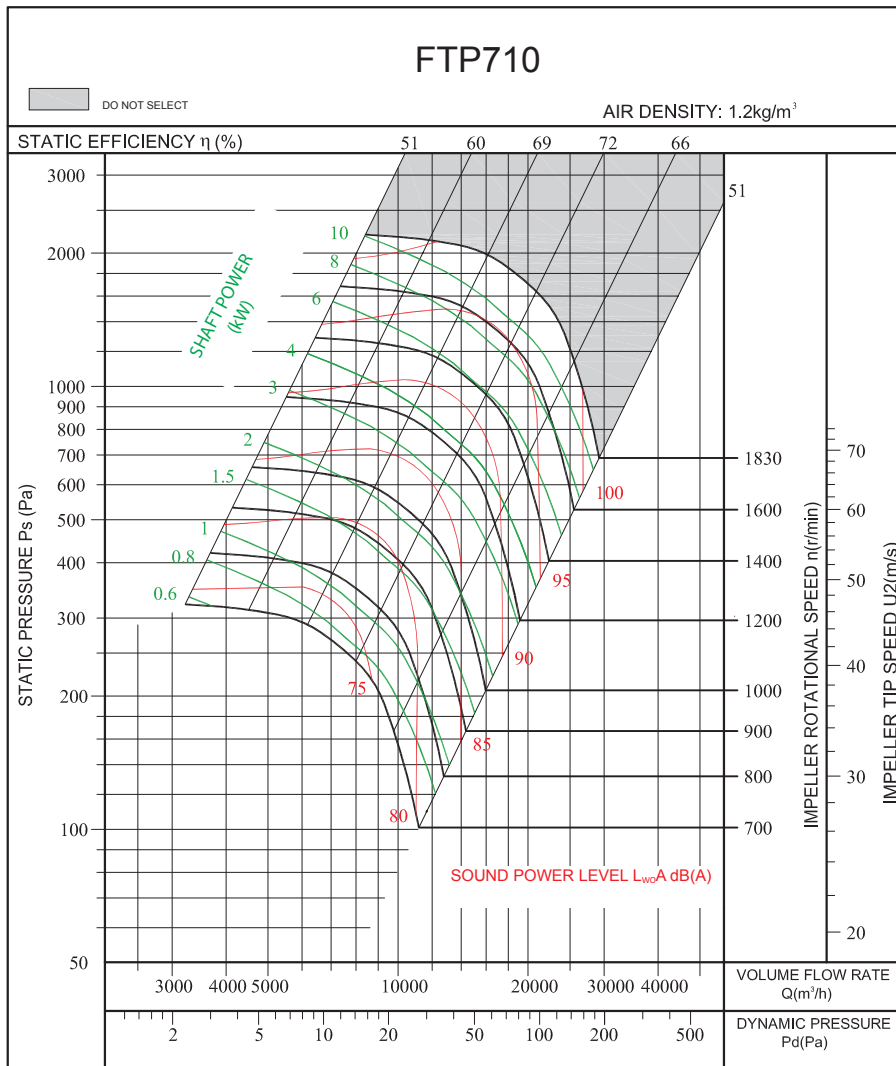


FTP710 FEG80

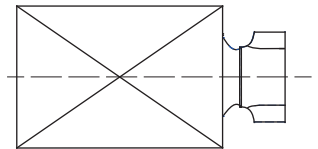
Technical Data & Performance Curve

Wheel diameter	D = 716mm	Fan weight	m = 140 kg
Moment of inertia	J = 2.723 kg·m ²	Speed limit	n _{max} = 1830 r/min

Performance certified is for installation type A: free inlet, free outlet. Performance ratings do not include the effects of appurtenances (accessories). The A-weighted sound ratings shown have been calculated per AMCA International Standard 301. Values shown are for outlet L_{wA} sound power levels for installation type A: free inlet, free outlet.



Measured in installation A according to AMCA Standard 210:

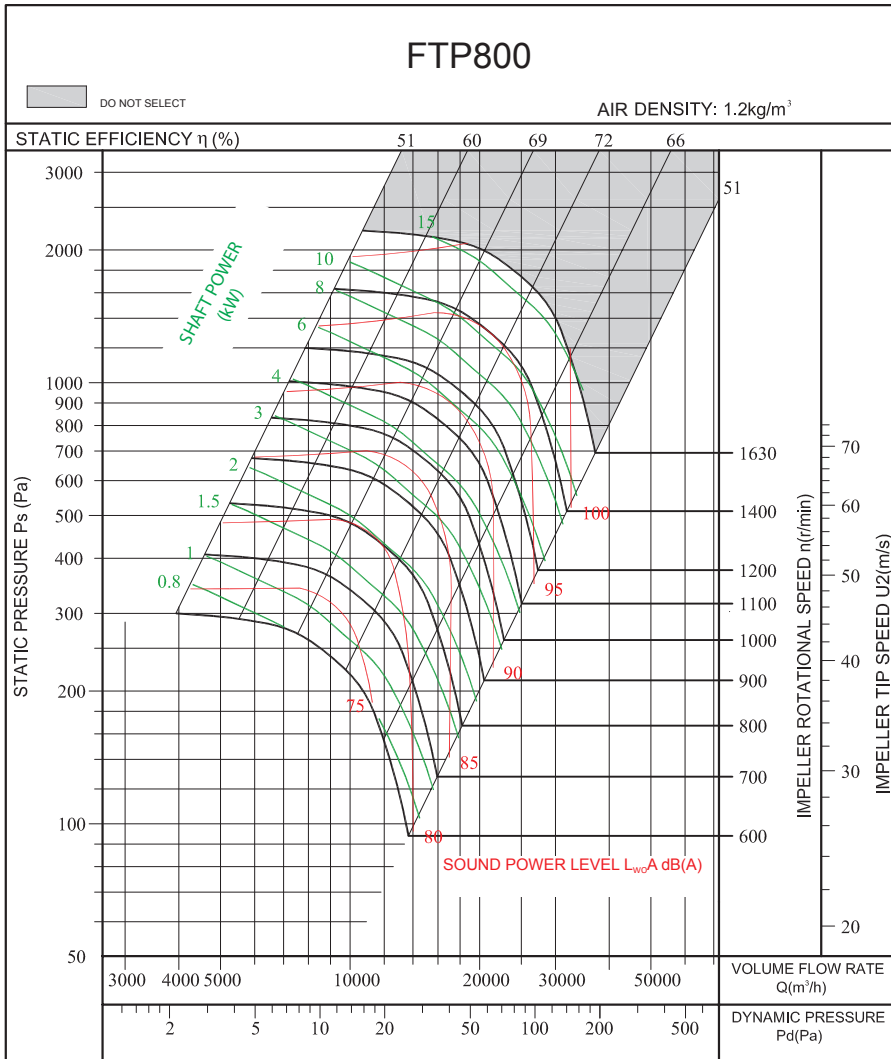


FTP800 FEG80

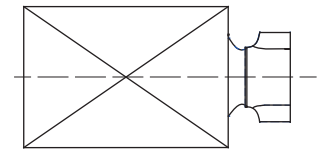
Technical Data & Performance Curve

Wheel diameter	D = 806 mm	Fan weight	m = 210 kg
Moment of inertia	J = 5.034 kg·m ²	Speed limit	n _{max} = 1630 r/min

Performance certified is for installation type A: free inlet, free outlet. Performance ratings do not include the effects of appurtenances (accessories). The A-weighted sound ratings shown have been calculated per AMCA International Standard 301. Values shown are for outlet L_wA sound power levels for installation type A: free inlet, free outlet.



Measured in installation A according to AMCA Standard 210:

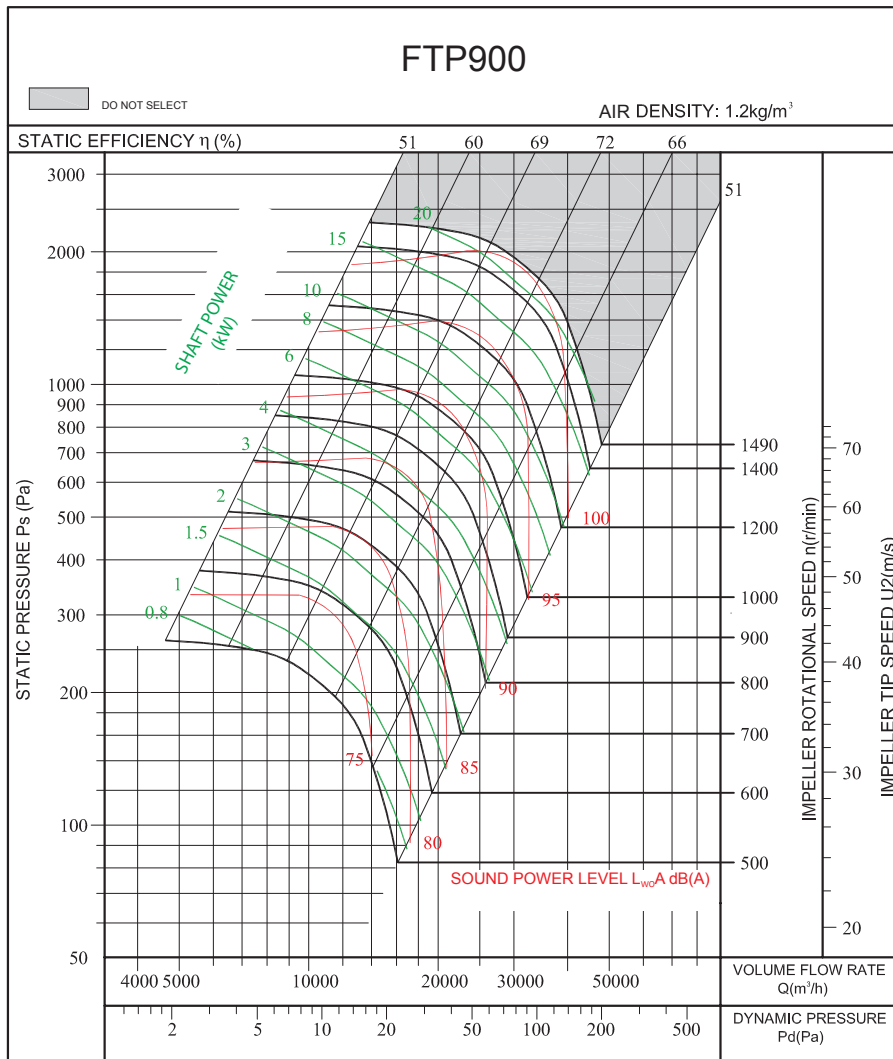


FTP900 FEG80

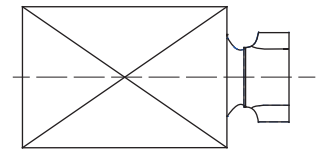
Technical Data & Performance Curve

Wheel diameter	D = 905 mm	Fan weight	m = 300 kg
Moment of inertia	J = 9.214 kg·m ²	Speed limit	n _{max} = 1490 r/min

Performance certified is for installation type A: free inlet, free outlet. Performance ratings do not include the effects of appurtenances (accessories). The A-weighted sound ratings shown have been calculated per AMCA International Standard 301. Values shown are for outlet L_{wc}A sound power levels for installation type A: free inlet, free outlet.



Measured in installation A according to AMCA Standard 210:

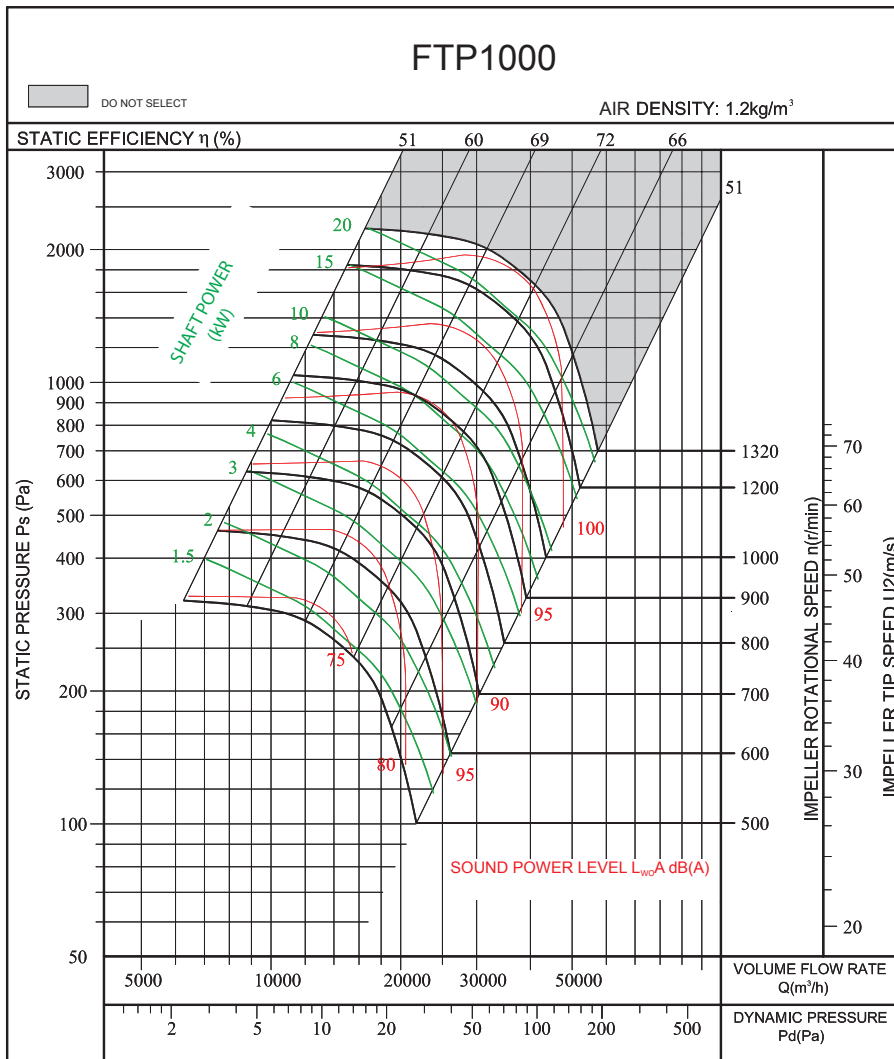


FTP1000 FEG80

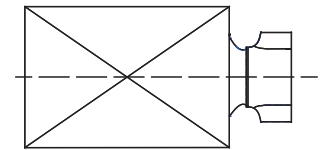
Technical Data & Performance Curve

Wheel diameter	D = 1000 mm	Fan weight	m = 350 kg
Moment of inertia	J = 14.375 kg·m ²	Speed limit	n _{max} = 1320 r/min

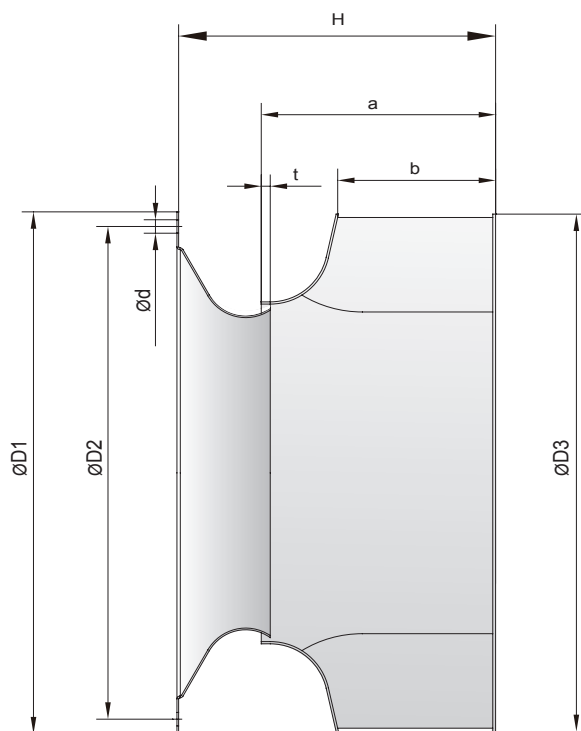
Performance certified is for installation type A: free inlet, free outlet. Performance ratings do not include the effects of appurtenances (accessories). The A-weighted sound ratings shown have been calculated per AMCA International Standard 301. Values shown are for outlet L_{wc}A sound power levels for installation type A: free inlet, free outlet.



Measured in installation A according to AMCA Standard 210:



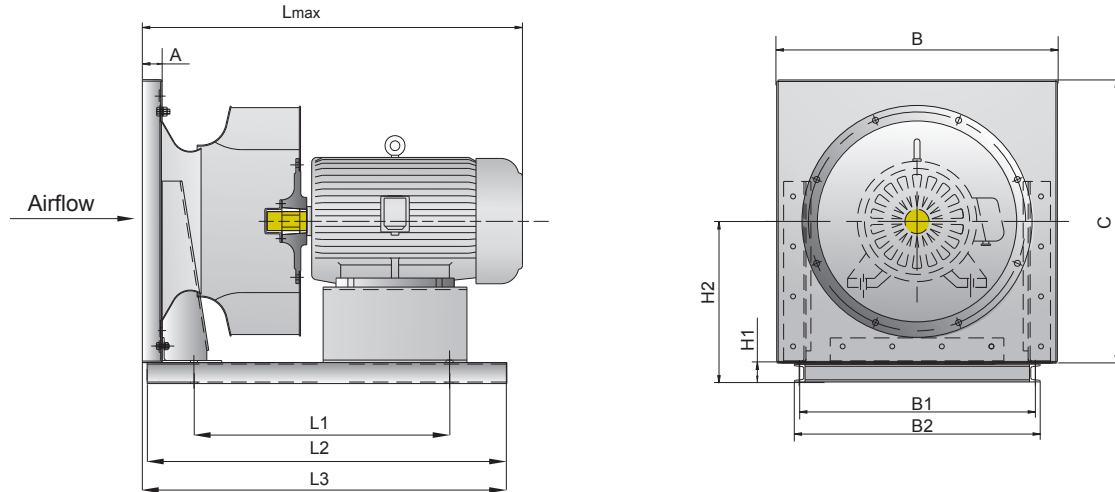
Impeller & Inlet cone



Unit : mm

Model	a	b	t	ØD1	ØD2	ØD3	H	Ød
FTP280	117	84	4	300	280	323	169	7
FTP315	126	92	5	355	325	360	178	7
FTP355	144	103	6	383	344	406	196	7
FTP400	160	116	7	423	386	456	220	7
FTP450	179	131	7	466	432	512	243	7
FTP500	200	145	8	515	485	570	277	9
FTP560	229	164	8	570	544	640	314	9
FTP630	253	184	9	635	605	720	353	9
FTP710	283	206	10	700	670	810	394	9
FTP800	320	233	12	778	750	912	447	12
FTP900	357	260	14	875	844	1023	503	12
FTP1000	400	291	16	980	945	1120	561	12

Plug Fans



Unit : mm

Model	Motor frame size	A	B	C	H1	H2	L1	L2	L3	Lmax*	B1	B2
FTP280	71-100	35	396	473	50	275	360	460	465	605	310	346
FTP315	71-112	35	440	523	50	303	360	460	465	615	360	396
FTP355	71-80 90-112	35	480	569	50	329	300 380	420 500	425 505	635	400	436
FTP400	80-112 132	35	520	624	50	364	400 500	520 620	525 625	755	450	486
FTP450	90-112 132	35	590	697	50	402	400 500	520 620	525 625	780	510	546
FTP500	90-112 132-160	40	650	778	63	453	440 620	600 780	605 785	950	550	590
FTP560	90-112 132-160	40	720	878	63	518	460 660	620 820	625 825	990	610	650
FTP630	112 132-160	45	800	975	63	575	510 700	670 860	675 865	1025	685	725
FTP710	112-132 160-180	50	880	1116	80	676	600 740	800 940	805 945	1125	770	810
FTP800	132 160-180	50	1000	1250	80	750	650 800	850 1000	860 1010	1180	850	890
FTP900	132 160-180	50	1120	1393	80	833	700 900	900 1100	910 1110	1240	960	1000
FTP1000	160-200	50	1250	1536	80	911	1000	1200	1210	1365	1080	1120

*Dimension Lmax is approximate as it varies with the make of the motor.



Elta Asia Sdn Bhd

Tel **+603 7846 0340**

Email **info@elta.asia**

elta.asia

FTP-2026 Issue A



FS 676456

A MEMBER OF  ELTA GROUP