

ELTATRADE
Ventilation Specialists



URF100

ULTRA RESPONSE DUCTED CEILING EXHAUST FAN

URF is a low profile, extraction fan that can be installed into tight ceiling spaces such as between floors. It features a non-return damper to eliminate backdraft and a high-performance centrifugal impeller that produces powerful airflow and low noise. Smartflow Technology ensures optimum airflow. Models to suit 100mm diameter duct sizes are available.



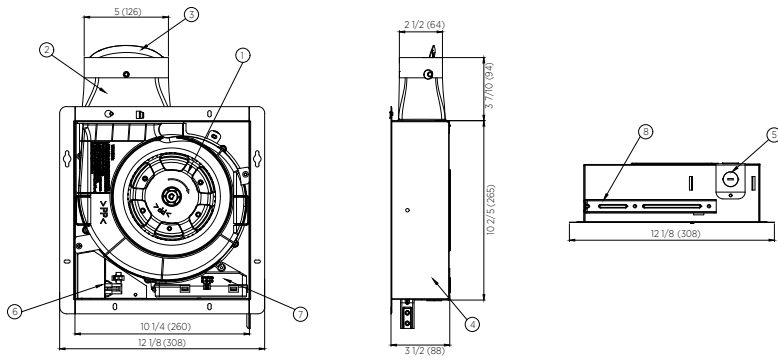
MODEL NO.	URF100		
CFM	50	80	110
Avg. dB(A) @3m	35	36	36
Input Power (W)	22W		
Voltage (V)	220-240 VAC		
Frequency (Hz)	50		

FEATURES

- Three airflow selectable
50/80/110 CFM (free air)
- Removable clip-in grille*
makes cleaning easy
- Convenient installation
screw-in fixing
- Designed for use in ducted
systems
- Non-return damper
eliminates backdraft
- Housing is manufactured
from steel painted black
- Fans are Brushless DC for
energy efficiency

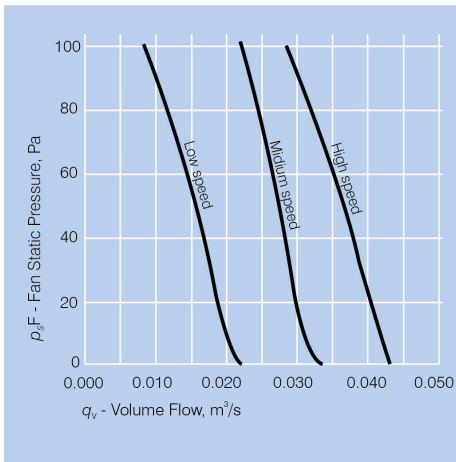
* Grille part number SRG100SW-SP
(sold separately)

DIMENSIONS



All dimensions in mm.

PERFORMANCE DATA



Note: Tested with grilles installed.



Elta Trade is proudly brought to you by Elta Fans Asia.

For the full range of products please visit our website.

Malaysia +(603) 7846 0340
www.eltatrade.asia

A BRAND WITHIN  ASIA