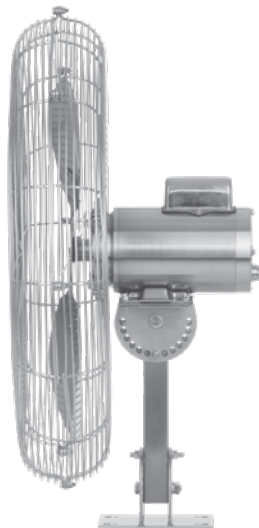
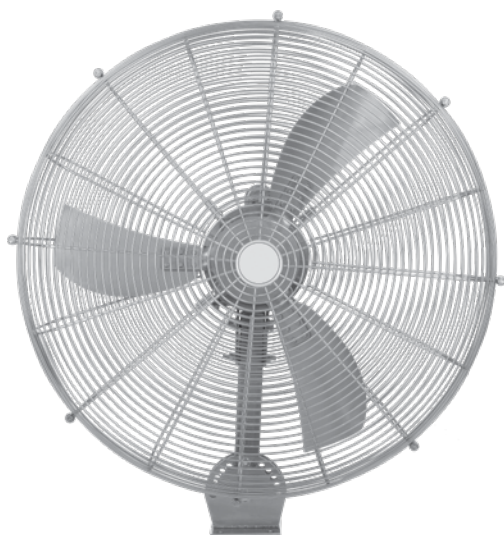


SINGLE PHASE WASHDOWN FAN

De-stratification Fan

WASHDOWN FAN SERIES - SINGLE PHASE



Description

The Single Phase Washdown Fan is the perfect solution for effectively and efficiently moving air in work areas where strict hygiene requirements exist. Designed for frequent washing, cleaning is made simple with users able to simply pressure wash the fan without any damage to the unit. The motor is rated IP69K and the unit is made of electropolished 304 stainless steel. Made in Australia to ensure durability, longevity and maintained performance during the life of the fan. It is backed with a 2 year warranty as standard.

Typical Applications

Specialised for food and beverage processing factories, kitchens, hospitals and other clean, corrosive or humid environments. Also suitable for retail spaces, shopping centres, health clubs, sport centres, schools, religious facilities, restaurants, theatres, stadiums, airports, distribution and manufacturing facilities, dairy/livestock barns and factories.

Features

- Fan can be pressure washed for simple and easy cleaning.
- Long life span with a 100% stainless steel construction.
- Stainless steel mounting bracket included as standard.
- Blades and motors carefully matched to maximise performance and efficiency.
- Manufactured in Australia to ensure high quality construction and performance.
- Motor rated IP69K.
- Comes with a 2 year warranty as standard.

Construction

Exterior casing, impellers, motor casing and mounting bracket constructed from 304 electropolished stainless steel. The unit can be completely pressure washed without damage to the impeller or motor.

Motor

Type – Single Phase Induction, Stainless Steel.

Electricity Supply – Single Phase 240V, 50HZ.

Speed – 1360 RPM.

Maximum Ambient Temp - 40° C.

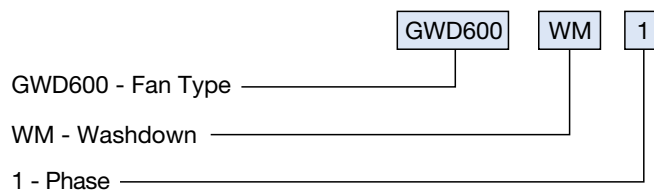
Insulation Type – Class F.

IP Rating – IP69K.

Testing

Contact your local office for more information.

How To Order



Suggested Specification

The Single Phase Washdown fans shall be of the Washdown Fan Series as supplied by Elta Fans. Exterior casing, impellers and motor shell constructed from 304 electropolished stainless steel, including the brackets. Motor shall be rated IP69K with Class F insulation. The unit can be completely pressure washed without damage to the impeller or motor.

Elta Fans Malaysia Sdn Bhd

Tel **+603 7846 0340**

Fax **+603 7842 1132**

Email **info@eltafans.asia**

No. 147, Jalan TUDM Kampung
Baru Subang, 40150 Shah Alam,
Selangor West Malaysia, Malaysia

eltafans.asia

GWD600-30-08-2019 Issue A



FS 676456