

# CENTRI-GRAIN HGD

Grain Pedestal Fan

---

**ELTA**



# CENTRI-GRAIN HGD

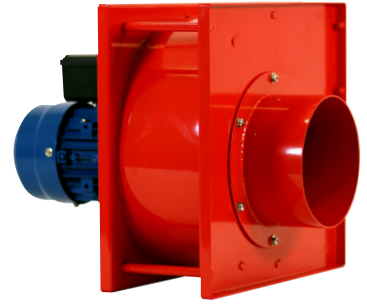
## Product Overview

**The Elta range of Centri-Grain Pedestal Fans are designed for use with 100mm and 200mm pedestals or spears to maintain optimal storage conditions and preserve the quality of harvested grains.**

The use of grain spot cooling fans offers several benefits to grain storage facilities, including reduced risk of spoilage and mould growth, improved grain quality, and extended storage life. By maintaining uniform temperatures throughout the grain mass, these fans help preserve the nutritional value and marketability of the stored grain.

Our Grain Pedestal Fan offers a primed and painted 2mm mild steel plate construction; offering a robust construction and long life. Alongside that, it features built-in corner stiffening meaning additional strength and supports carrying in any position.

- Single and Three Phase Options
- Integral thermal contact for motor protection
- Aluminium frame Motors - robust and lightweight
- Efficient IE2/IE3 motors in accordance with (EU) 2019/1781
- IP55
- High performance at reduced sound levels
- Suitable for 100mm or 200mm pedestals and Spears
- Comes standard with 150mm & 200mm spigots
- Comes standard with a 2-metre fly lead
- 1 Year warranty



# CENTRI-GRAIN HGD

## Technical Information

Fan	Motor	Airflow	Pressure	Sound Level dB(A) @ 3m	Weight kg	Packed Weight kg
HGD1-1AC	220V, 50Hz, 0.18kW, 1.25A, IP55	304 CFM	2" wg	66	10	11.36
		516 m³/hr	498 PA			
HGD3-1AC	220V, 50Hz, 1.10kW, 6.40A, IP55	884 CFM	5" wg	65	22.7	25.1
		1501 m³/hr	1245 PA			
HGD3-3AC	380V, 50Hz, 1.10kW, 2.43A, IP55	934 CFM	5" wg	65	23.1	25.5
		1586 m³/hr	1245 PA			
HGD4-1AC	220V, 50Hz, 1.50kW, 8.50A, IP55	837 CFM	5" wg	68	26.8	29.1
		1421 m³/hr	1245 PA			
HGD4-3AC	380V, 50Hz, 1.50kW, 3.22A, IP55	742 CFM	5" wg	66	26.3	28.7
		1260 m³/hr	1245 PA			
GD5-3AC	380V, 50Hz, 2.20kW, 4.58A, IP55	1550 CFM	5" wg	72	32.6	35.35
		2633 m³/hr	1245 PA			

# CENTRI-GRAIN HGD

## Guide to Near Ambient Drying

The following tables are guidance purposes only

Depth (ft) & Pressure	Depth (m)	Pressure (Pa)	Model Suitable for Storage Depth						CFM (m³/hr) at Storage Depth						Approximate Tonnage per Fan					
			HGD1	HGD3		HGD4		HGD5	HGD1	HGD3		HGD4		HGD5	HGD1	HGD3		HGD4		HGD5
			1Ph	1Ph	3Ph	1Ph	3Ph	3Ph	1Ph	1Ph	3Ph	1Ph	3Ph	3Ph	1Ph	1Ph	3Ph	1Ph	3Ph	3Ph
Up to 4ft storage 2" SWG	1.2	498	Y						304 (516)						3					
Above 4ft to 6ft storage 3" SWG	1.8	747				Y	Y					1232 (2093)	1203 (2044)					12	12	
Above 6ft to 8ft storage 4" SWG	2.4	996				Y	Y					1083 (1840)	1012 (1719)					11	10	
Above 8ft to 10ft storage 5" SWG	3.0	1245		Y	Y	Y	Y	Y		884 (1502)	934 (1587)	837 (1422)	742 (1261)	1550 (2633)		9	9	8	7	16
Above 10ft to 12ft storage 6" SWG	3.7	1494		Y	Y	Y	Y	Y		307 (522)	462 (785)	220 (374)	246 (418)	1233 (2095)		3	5	2	2	12
Above 12ft to 14ft storage 7" SWG	4.3	1743						Y						831 (1412)						8

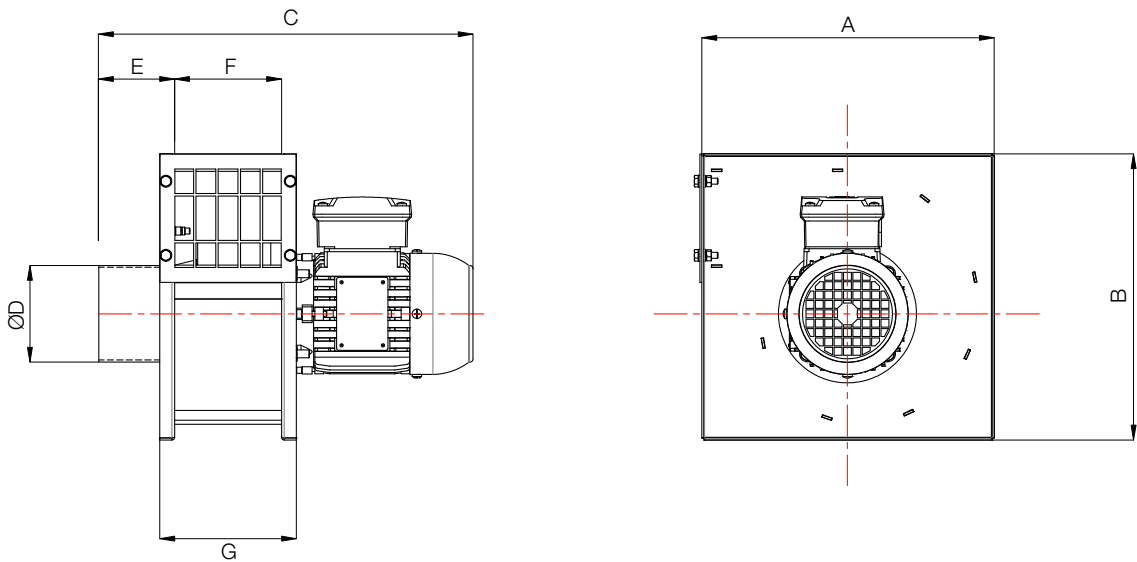
Based on 180m³/hr per tonne of grain.

Weather, moisture content and grain depth must be taken in to account to reduce risk of spoilage.

# CENTRI-GRAIN HGD

## Dimensions

Model	A	B	C	D	E	F	G
HGD1	297	290	380	98	77	109	139
HGD3	445	424	504	198	102	146	196
HGD4	445	424	494	198	102	136	186
HGD5	493	468	525	198	102	166	216



Dimensions in mm.

# CENTRI-GRAIN HGD

## Notes

This image shows a single page of blank, lined paper. The paper is white and features horizontal blue lines spaced evenly apart, typical of notebook paper. There are no margins, text, or other markings on the page.

# CENTRI-GRAIN HGD

## Notes

[illegible]



Tel **+44 (0)1725 511422**  
Email **[agriculture@eltauk.com](mailto:agriculture@eltauk.com)**  
**[eltauk.com/agriculture](http://eltauk.com/agriculture)**

ISSUE A. SEP 2025.

A MEMBER OF  **ELTA  
GROUP**